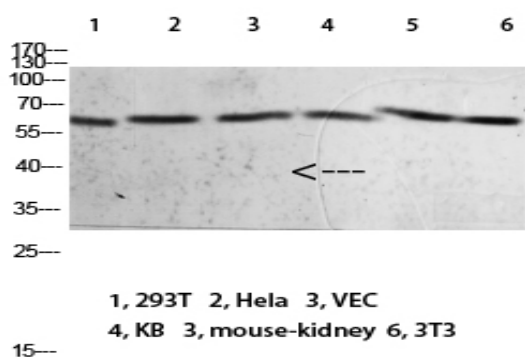


Mox1 Polyclonal Antibody

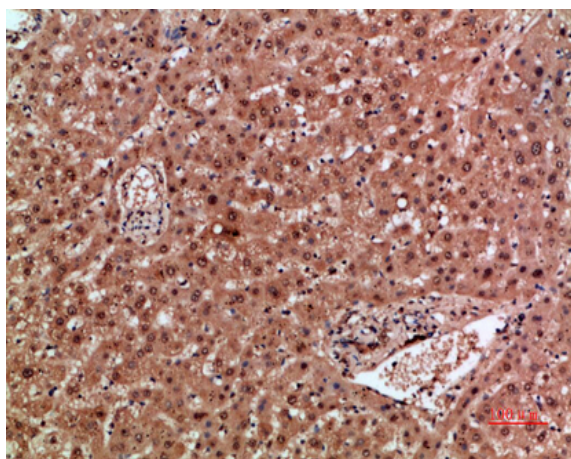
Catalog No :	YT5871
Reactivity :	Human;Mouse;Rat
Applications :	WB;IHC;IF;ELISA
Target :	Mox1
Fields :	>>Osteoclast differentiation;>>AGE-RAGE signaling pathway in diabetic complications;>>Alzheimer disease;>>Pathways of neurodegeneration - multiple diseases;>>Chemical carcinogenesis - reactive oxygen species;>>Lipid and atherosclerosis;>>Fluid shear stress and atherosclerosis
Gene Name :	NOX1 MOX1 NOH1
Protein Name :	NADPH oxidase 1 (NOX-1) (EC 1.-.-.) (Mitogenic oxidase 1) (MOX-1) (NADH/NADPH mitogenic oxidase subunit P65-MOX) (NOH-1)
Human Gene Id :	27035
Human Swiss Prot No :	Q9Y5S8
Mouse Gene Id :	237038
Mouse Swiss Prot No :	Q8CIZ9
Rat Swiss Prot No :	Q9WV87
Immunogen :	Synthetic peptide from human protein at AA range: 210-260
Specificity :	The antibody detects endogenous Mox1
Formulation :	Liquid in PBS containing 50% glycerol, 0.5% BSA and 0.02% sodium azide.
Source :	Polyclonal, Rabbit,IgG
Dilution :	WB 1:500-2000,IHC 1:500-200, ELISA 1:10000-20000. IF 1:50-200

Purification :	The antibody was affinity-purified from rabbit antiserum by affinity-chromatography using epitope-specific immunogen.
Concentration :	1 mg/ml
Storage Stability :	-15°C to -25°C/1 year(Do not lower than -25°C)
Observed Band :	65kD
Cell Pathway :	Leukocyte transendothelial migration;
Background :	This gene encodes a member of the NADPH oxidase family of enzymes responsible for the catalytic one-electron transfer of oxygen to generate superoxide or hydrogen peroxide. Alternatively spliced transcript variants encoding multiple isoforms have been observed for this gene. [provided by RefSeq, Nov 2012],
Function :	cofactor:FAD .,cofactor:NADP .,enzyme regulation:The oxidase activity is potentiated by NOXA1 and NOXO1.,function:NOH-1S is a voltage-gated proton channel that mediates the H(+) currents of resting phagocytes and other tissues. It participates in the regulation of cellular pH and is blocked by zinc. NOH-1L is a pyridine nucleotide-dependent oxidoreductase that generates superoxide and might conduct H(+) ions as part of its electron transport mechanism, whereas NOH-1S does not contain an electron transport chain.,similarity:Contains 1 FAD-binding FR-type domain.,similarity:Contains 1 ferric oxidoreductase domain.,subunit:NOX1, NOXA1, NOXO1, RAC1 and CYBA forms a functional multimeric complex supporting ROS production. Interacts with NOXA1 and NOXO1.,tissue specificity:NOH-1L is detected in colon, uterus, prostate, and colon carcinoma, but not in peripheral blood leukocytes. NOH-1S is dete
Subcellular Location :	Cell projection, invadopodium membrane ; Multi-pass membrane protein . Cell membrane .
Expression :	NOH-1L is detected in colon, uterus, prostate, and colon carcinoma, but not in peripheral blood leukocytes. NOH-1S is detected only in colon and colon carcinoma cells.
Sort :	10183
No4 :	1
Host :	Rabbit
Modifications :	Unmodified

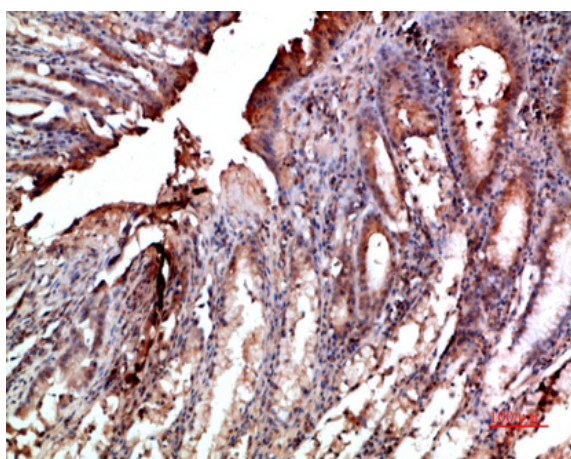
Products Images



Western blot analysis of 293T HeLa VEC KB mouse-kidney 3T3 lysate, antibody was diluted at 2000. Secondary antibody(catalog#:RS0002) was diluted at 1:20000



Immunohistochemical analysis of paraffin-embedded human-liver, antibody was diluted at 1:200



Immunohistochemical analysis of paraffin-embedded human-stomach, antibody was diluted at 1:200