

C1RL Polyclonal Antibody

Catalog No :	YT6105
Reactivity :	Human;Rat;Mouse;
Applications :	WB;ELISA
Target :	C1RL
Gene Name :	C1RL
Protein Name :	C1RL
Human Gene Id :	51279
Human Swiss Prot No :	Q9NZP8
Mouse Gene Id :	232371
Mouse Swiss Prot No :	Q3UZ09
Immunogen :	Synthesized peptide derived from human C1RL. at AA range: 371-420
Specificity :	C1RL Polyclonal Antibody detects endogenous levels of C1RL
Formulation :	Liquid in PBS containing 50% glycerol, 0.5% BSA and 0.02% sodium azide.
Source :	Polyclonal, Rabbit,IgG
Dilution :	WB 1:500-2000, ELISA 1:10000-20000
Purification :	The antibody was affinity-purified from rabbit antiserum by affinity-chromatography using epitope-specific immunogen.
Concentration :	1 mg/ml
Storage Stability :	-15°C to -25°C/1 year(Do not lower than -25°C)

Observed Band : 53kD

Background :

caution:Does not associate with the C1 complex. According to PubMed:15385675 doesn't cleave the proform of complement C1s.,function:Mediates the proteolytic cleavage of HP/haptoglobin in the endoplasmic reticulum.,induction:Up-regulated in monocytes and dendritic cells (DC) undergoing maturation or activation.,similarity:Belongs to the peptidase S1 family.,similarity:Contains 1 CUB domain.,similarity:Contains 1 peptidase S1 domain.,tissue specificity:Highly expressed in placenta, liver, kidney, pancreas, moderately in lung, spleen, prostate, ovary, colon, and PBL, and weakly in heart, skeletal muscle, thymus, testis, and small intestine. Expressed in PC-3 (prostate adenocarcinoma) and SK-OV-3 (ovary adenocarcinoma) cells, but not in LoVo and HT-29 (colon adenocarcinoma), SMMC7721 (hepatocellular carcinoma), CaoV-3 (ovary adenocarcinoma), HeLa (cervix epithelioid carcinoma), MCF-7 (breast adenocarcinoma), U251 (glioma) or A549 (lung carcinoma) cells. Widely expressed in myeloid leukemia cell lines, including K-562 (chronic myelogenous leukemia), THP-1 (myelomonocytic leukemia), HL-60 and NB4 (promyelocytic leukemia), and KG-1 (acute myelogenous leukemia) cells. Expressed mainly in the liver and in serum (at protein level).,

Function :

caution:Does not associate with the C1 complex. According to PubMed:15385675 doesn't cleave the proform of complement C1s.,function:Mediates the proteolytic cleavage of HP/haptoglobin in the endoplasmic reticulum.,induction:Up-regulated in monocytes and dendritic cells (DC) undergoing maturation or activation.,similarity:Belongs to the peptidase S1 family.,similarity:Contains 1 CUB domain.,similarity:Contains 1 peptidase S1 domain.,tissue specificity:Highly expressed in placenta, liver, kidney, pancreas, moderately in lung, spleen, prostate, ovary, colon, and PBL, and weakly in heart, skeletal muscle, thymus, testis, and small intestine. Expressed in PC-3 (prostate adenocarcinoma) and SK-OV-3 (ovary adenocarcinoma) cells, but not in LoVo and HT-29 (colon adenocarcinoma), SMMC7721 (hepatocellular carcinoma), CaoV-3 (ovary adenocarcinoma), HeLa (cervix epithelioid carcinoma), MCF-7 (breast

Subcellular Location :Secreted .

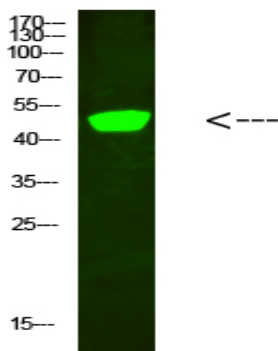
Expression :

Highly expressed in placenta, liver, kidney, pancreas, moderately in lung, spleen, prostate, ovary, colon, and PBL, and weakly in heart, skeletal muscle, thymus, testis, and small intestine. Expressed in PC-3 (prostate adenocarcinoma) and SK-OV-3 (ovary adenocarcinoma) cells, but not in LoVo and HT-29 (colon adenocarcinoma), SMMC7721 (hepatocellular carcinoma), CaoV-3 (ovary adenocarcinoma), HeLa (cervix epithelioid carcinoma), MCF-7 (breast adenocarcinoma), U-251MG (glioma) or A-549 (lung carcinoma) cells. Widely expressed in myeloid leukemia cell lines, including K-562 (chronic myelogenous leukemia), THP-1 (myelomonocytic leukemia), HL-60 and NB4 (promyelocytic leukemia), and KG-1 (acute myelogenous leukemia) cells. Expressed mainly in the liver and in serum (at protein level).

2940

Sort :	<u>1</u>
Host :	<u>Rabbit</u>
Modifications :	<u>Unmodified</u>

Products Images



Western Blot analysis of hela cells using primary antibody diluted at 1:500(4°C overnight). Secondary antibody:Goat Anti-rabbit IgG IRDye 800(diluted at 1:5000, 25°C, 1 hour)