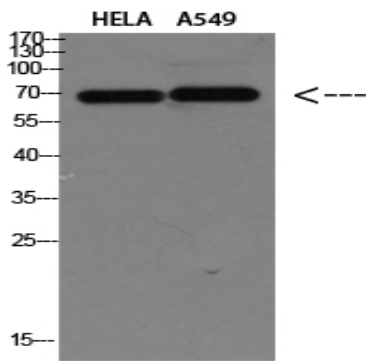


DCT Polyclonal Antibody

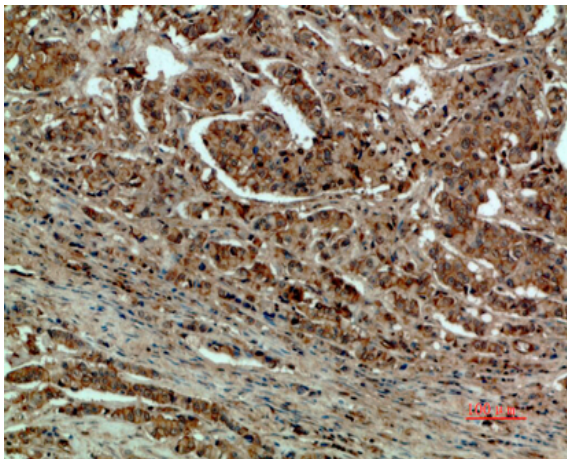
Catalog No :	YT5849
Reactivity :	Human;Mouse
Applications :	WB;IHC;IF;ELISA
Target :	DCT
Fields :	>>Tyrosine metabolism;>>Metabolic pathways;>>Melanogenesis
Gene Name :	DCT TYRP2
Protein Name :	DCT
Human Gene Id :	1638
Human Swiss Prot No :	P40126
Mouse Gene Id :	13190
Mouse Swiss Prot No :	P29812
Immunogen :	Synthetic peptide from human protein at AA range: 232-304
Specificity :	The antibody detects endogenous DCT
Formulation :	Liquid in PBS containing 50% glycerol, 0.5% BSA and 0.02% sodium azide.
Source :	Polyclonal, Rabbit,IgG
Dilution :	WB 1:500-2000,IHC 1:500-200, ELISA 1:10000-20000. IF 1:50-200
Purification :	The antibody was affinity-purified from rabbit antiserum by affinity-chromatography using epitope-specific immunogen.
Concentration :	1 mg/ml

Storage Stability :	-15°C to -25°C/1 year(Do not lower than -25°C)
Observed Band :	59kD
Cell Pathway :	Tyrosine metabolism;Melanogenesis;
Background :	catalytic activity:L-dopachrome = 5,6-dihydroxyindole-2-carboxylate.,cofactor: Binds 2 zinc ions per subunit.,function:Involved in regulating eumelanin and phaeomelanin levels.,pathway:Pigment biosynthesis; melanin biosynthesis.,similarity:Belongs to the tyrosinase family.,subunit:Tyrosinase, TYRP1 and TYRP2 may form a multienzyme complex.,
Function :	catalytic activity:L-dopachrome = 5,6-dihydroxyindole-2-carboxylate.,cofactor: Binds 2 zinc ions per subunit.,function:Involved in regulating eumelanin and phaeomelanin levels.,pathway:Pigment biosynthesis; melanin biosynthesis.,similarity:Belongs to the tyrosinase family.,subunit:Tyrosinase, TYRP1 and TYRP2 may form a multienzyme complex.,
Subcellular Location :	Melanosome membrane ; Single-pass type I membrane protein . Melanosome . Proper trafficking to melanosome is regulated by SGSM2, ANKRD27, RAB9A, RAB32 and RAB38. .
Expression :	Liver,Lymphnode melanoma metastases,Mammary gland,Melanoma,
Sort :	5040
No4 :	1
Host :	Rabbit
Modifications :	Unmodified

Products Images



Western blot analysis of HELA A549 Cell Lysate, antibody was diluted at 1:1000. Secondary antibody(catalog#:RS0002) was diluted at 1:20000



Immunohistochemical analysis of paraffin-embedded human-breast-cancer, antibody was diluted at 1:200