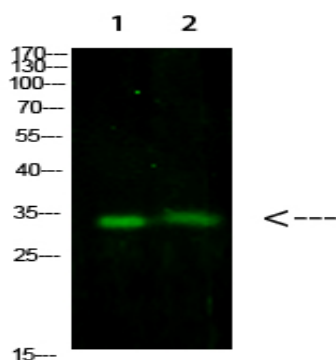


TNFAIP8L3 Polyclonal Antibody

Catalog No :	YT6072
Reactivity :	Human;Mouse
Applications :	WB;ELISA
Target :	TNFAIP8L3
Gene Name :	TNFAIP8L3
Protein Name :	TNFAIP8L3
Human Gene Id :	388121
Human Swiss Prot No :	Q5GJ75
Mouse Gene Id :	244882
Mouse Swiss Prot No :	Q3TBL6
Immunogen :	Synthesized peptide derived from human TNFAIP8L3. at AA range: 15-45
Specificity :	This antibody detects endogenous levels of TNFAIP8L3
Formulation :	Liquid in PBS containing 50% glycerol, 0.5% BSA and 0.02% sodium azide.
Source :	Polyclonal, Rabbit,IgG
Dilution :	WB 1:500-2000, ELISA 1:10000-20000
Purification :	The antibody was affinity-purified from rabbit antiserum by affinity-chromatography using epitope-specific immunogen.
Concentration :	1 mg/ml
Storage Stability :	-15°C to -25°C/1 year(Do not lower than -25°C)

Observed Band :	33kD
Background :	caution:It is uncertain whether Met-1 or Met-89 is the initiator.,similarity:Belongs to the TNFAIP8 family.,
Function :	caution:It is uncertain whether Met-1 or Met-89 is the initiator.,similarity:Belongs to the TNFAIP8 family.,
Subcellular Location :	Cytoplasm . Cell membrane . On PDGF activation, translocates from cytoplasm to plasma membrane. .
Expression :	Widely expressed (at protein level) (PubMed:25479791). Highly expressed in most carcinoma cell lines (PubMed:25479791, PubMed:25242044).
Sort :	17257
No4 :	1
Host :	Rabbit
Modifications :	Unmodified

Products Images



Western Blot analysis of 1,293T 2,mouse-brain cells using primary antibody diluted at 1:1000(4 °C overnight). Secondary antibody:Goat Anti-rabbit IgG IRDye 800(diluted at 1:5000, 25 °C, 1 hour)