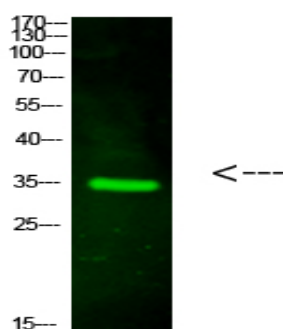


## CTXL Polyclonal Antibody

<b>Catalog No :</b>	YT6056
<b>Reactivity :</b>	Human;Mouse
<b>Applications :</b>	WB;ELISA
<b>Target :</b>	CTXL
<b>Gene Name :</b>	VSIG2 CTH CTXL UNQ2770/PRO7154
<b>Protein Name :</b>	CTXL
<b>Human Gene Id :</b>	23584
<b>Human Swiss Prot No :</b>	Q96IQ7
<b>Mouse Gene Id :</b>	57276
<b>Mouse Swiss Prot No :</b>	Q9Z109
<b>Immunogen :</b>	Synthesized peptide derived from human CTXL. at AA range: 260-290
<b>Specificity :</b>	This antibody detects endogenous levels of CTXL
<b>Formulation :</b>	Liquid in PBS containing 50% glycerol, 0.5% BSA and 0.02% sodium azide.
<b>Source :</b>	Polyclonal, Rabbit,IgG
<b>Dilution :</b>	WB 1:500-2000, ELISA 1:10000-20000
<b>Purification :</b>	The antibody was affinity-purified from rabbit antiserum by affinity-chromatography using epitope-specific immunogen.
<b>Concentration :</b>	1 mg/ml
<b>Storage Stability :</b>	-15°C to -25°C/1 year(Do not lower than -25°C)

**Observed Band :** 34kD**Background :** similarity:Contains 1 Ig-like C2-type (immunoglobulin-like) domain.,similarity:Contains 1 Ig-like V-type (immunoglobulin-like) domain.,tissue specificity:Highly expressed in stomach, colon, prostate, trachea and thyroid glands and weakly in bladder and lung.,**Function :** similarity:Contains 1 Ig-like C2-type (immunoglobulin-like) domain.,similarity:Contains 1 Ig-like V-type (immunoglobulin-like) domain.,tissue specificity:Highly expressed in stomach, colon, prostate, trachea and thyroid glands and weakly in bladder and lung.,**Subcellular Location :** Membrane ; Single-pass type I membrane protein .**Expression :** Highly expressed in stomach, colon, prostate, trachea and thyroid glands and weakly in bladder and lung.**Sort :** 4668**No4 :** 1**Host :** Rabbit**Modifications :** Unmodified

## Products Images



Western Blot analysis of hela cells using primary antibody diluted at 1:1000(4 °C overnight). Secondary antibody:Goat Anti-rabbit IgG IRDye 800( diluted at 1:5000, 25 °C, 1 hour)