

CNPY3 Polyclonal Antibody

Catalog No :	YT6051
Reactivity :	Human;Mouse
Applications :	IHC;IF;ELISA
Target :	CNPY3
Gene Name :	CNPY3 CTG4A ERDA5 PRAT4A TNRC5 HSPC084 UNQ1934/PRO4409
Protein Name :	Protein canopy homolog 3 (CTG repeat protein 4a) (Expanded repeat-domain protein CAG/CTG 5) (Protein associated with TLR4) (Trinucleotide repeat-containing gene 5 protein)
Human Gene Id :	10695
Human Swiss Prot No :	Q9BT09
Mouse Gene Id :	72029
Mouse Swiss Prot No :	Q9DAU1
Immunogen :	Synthetic peptide from human protein at AA range: 1-50
Specificity :	The antibody detects endogenous CNPY3
Formulation :	Liquid in PBS containing 50% glycerol, 0.5% BSA and 0.02% sodium azide.
Source :	Polyclonal, Rabbit,IgG
Dilution :	IHC 1:50-200, ELISA 1:10000-20000. IF 1:50-200
Purification :	The antibody was affinity-purified from rabbit antiserum by affinity-chromatography using epitope-specific immunogen.
Concentration :	1 mg/ml
Storage Stability :	-15°C to -25°C/1 year(Do not lower than -25°C)

Background : canopy FGF signaling regulator 3(CNPY3) Homo sapiens This gene encodes a protein that binds members of the toll-like receptor protein family and functions as a chaperone to aid in folding and export of these proteins. Alternative splicing results in multiple transcript variants. Naturally occurring readthrough transcription occurs between this locus and the downstream GNMT (glycine N-methyltransferase) gene and is represented with GeneID:107080644. [provided by RefSeq, Jan 2016],

Function : similarity:Belongs to the canopy family.,similarity:Contains 1 saposin B-type domain.,subunit:Interacts with TLR4.,

Subcellular Location : Endoplasmic reticulum .

Expression : Brain cortex,Cervix,Colon,Liver,Lung,Spleen,Umbilical cord blood,

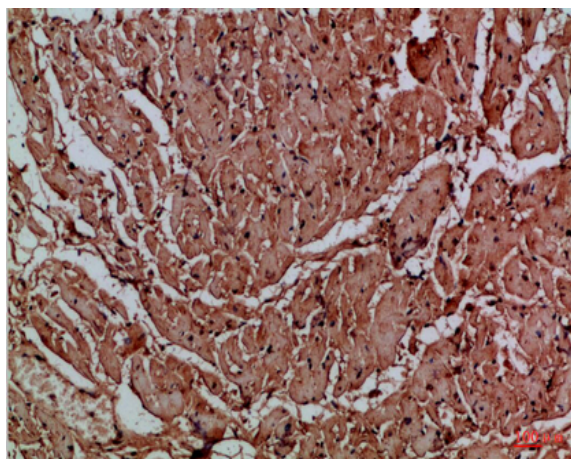
Sort : 4352

No4 : 1

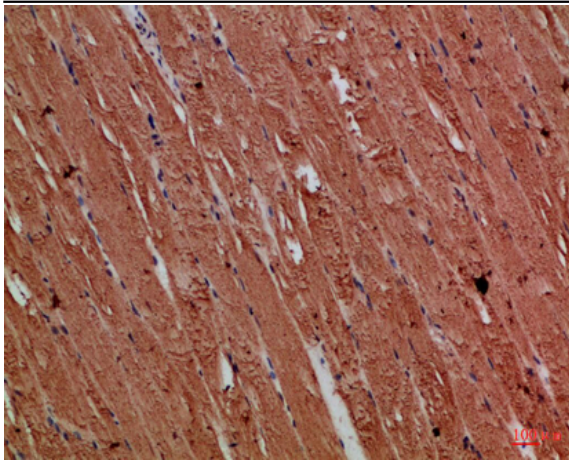
Host : Rabbit

Modifications : Unmodified

Products Images



Immunohistochemical analysis of paraffin-embedded Human-heart, antibody was diluted at 1:100



Immunohistochemical analysis of paraffin-embedded Human-skeletal-muscle, antibody was diluted at 1:100