

Granzyme M Polyclonal Antibody

Catalog No :	YT6049
Reactivity :	Human;Rat
Applications :	IHC;IF;ELISA
Target :	Granzyme M
Gene Name :	GZMM MET1
Protein Name :	Granzyme M (EC 3.4.21.-) (Met-1 serine protease) (Hu-Met-1) (Met-ase) (Natural killer cell granular protease)
Human Gene Id :	3004
Human Swiss Prot No :	P51124
Immunogen :	Synthetic peptide from human protein at AA range: 207-256
Specificity :	The antibody detects endogenous Granzyme M
Formulation :	Liquid in PBS containing 50% glycerol, 0.5% BSA and 0.02% sodium azide.
Source :	Polyclonal, Rabbit,IgG
Dilution :	IHC 1:50-200, ELISA 1:10000-20000. IF 1:50-200
Purification :	The antibody was affinity-purified from rabbit antiserum by affinity-chromatography using epitope-specific immunogen.
Concentration :	1 mg/ml
Storage Stability :	-15°C to -25°C/1 year(Do not lower than -25°C)
Background :	Human natural killer (NK) cells and activated lymphocytes express and store a distinct subset of neutral serine proteases together with proteoglycans and other immune effector molecules in large cytoplasmic granules. These serine proteases are collectively termed granzymes and include 4 distinct gene products:

granzyme A, granzyme B, granzyme H, and the protein encoded by this gene, granzyme M. Two transcript variants encoding different isoforms have been found for this gene. [provided by RefSeq, Apr 2012],

Function :

function:Cleaves peptide substrates after methionine, leucine, and norleucine.,similarity:Belongs to the peptidase S1 family. Granzyme subfamily.,similarity:Contains 1 peptidase S1 domain.,subcellular location:Granules of large granular lymphocytes.,

Subcellular Location :

Secreted. Cytoplasmic granule. Granules of large granular lymphocytes.

Expression :

Highly and constitutively expressed in activated natural killer (NK) cells.

Sort :

7090

No4 :

1

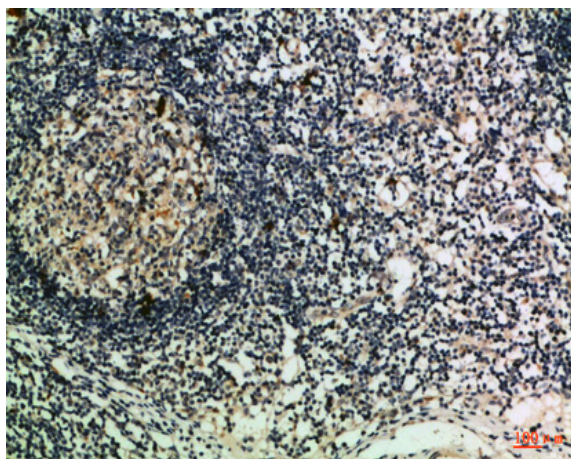
Host :

Rabbit

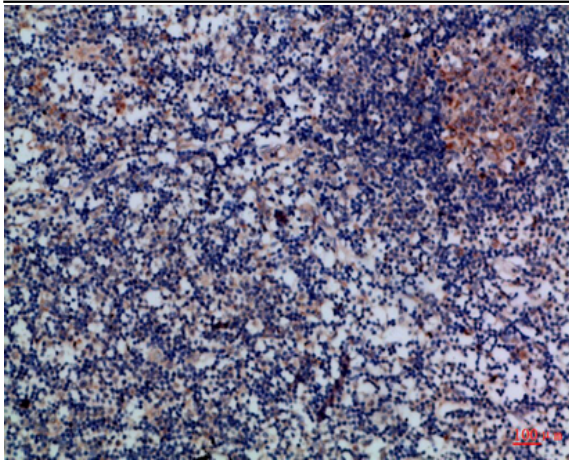
Modifications :

Unmodified

Products Images



Immunohistochemical analysis of paraffin-embedded Human-lymph, antibody was diluted at 1:100



Immunohistochemical analysis of paraffin-embedded Human-lymph, antibody was diluted at 1:100