

Epiregulin Polyclonal Antibody

Catalog No :	YT6045
Reactivity :	Human;Mouse;Rat
Applications :	IHC;IF;ELISA
Target :	Epiregulin
Fields :	>>MAPK signaling pathway;>>ErbB signaling pathway;>>PI3K-Akt signaling pathway;>>Colorectal cancer
Gene Name :	EREG
Protein Name :	Proepiregulin [Cleaved into: Epiregulin (EPR)]
Human Gene Id :	2069
Human Swiss Prot No :	O14944
Mouse Gene Id :	13874
Mouse Swiss Prot No :	Q61521
Immunogen :	Synthetic peptide from human protein at AA range: 71-120
Specificity :	The antibody detects endogenous Epiregulin
Formulation :	Liquid in PBS containing 50% glycerol, 0.5% BSA and 0.02% sodium azide.
Source :	Polyclonal, Rabbit,IgG
Dilution :	IHC 1:50-200, ELISA 1:10000-20000. IF 1:50-200
Purification :	The antibody was affinity-purified from rabbit antiserum by affinity-chromatography using epitope-specific immunogen.
Concentration :	1 mg/ml

Storage Stability : -15°C to -25°C/1 year (Do not lower than -25°C)

Cell Pathway : ErbB_HER;

Background : This gene encodes a secreted peptide hormone and member of the epidermal growth factor (EGF) family of proteins. The encoded protein is a ligand of the epidermal growth factor receptor (EGFR) and the structurally related erb-b2 receptor tyrosine kinase 4 (ERBB4). The encoded protein may be involved in a wide range of biological processes including inflammation, wound healing, oocyte maturation, and cell proliferation. Additionally, the encoded protein may promote the progression of cancers of various human tissues. [provided by RefSeq, Jul 2015],

Function : function:May be a mediator of localized cell proliferation. As a mitogen it may stimulate cell proliferation and/or angiogenesis.,similarity:Contains 1 EGF-like domain.,tissue specificity:In normal adults, expressed predominantly in the placenta and peripheral blood leukocytes. High levels were detected in carcinomas of the bladder, lung, kidney and colon.,

Subcellular Location : [Epiregulin]: Secreted, extracellular space .; [Proepiregulin]: Cell membrane ; Single-pass type I membrane protein .

Expression : In normal adults, expressed predominantly in the placenta and peripheral blood leukocytes. High levels were detected in carcinomas of the bladder, lung, kidney and colon.

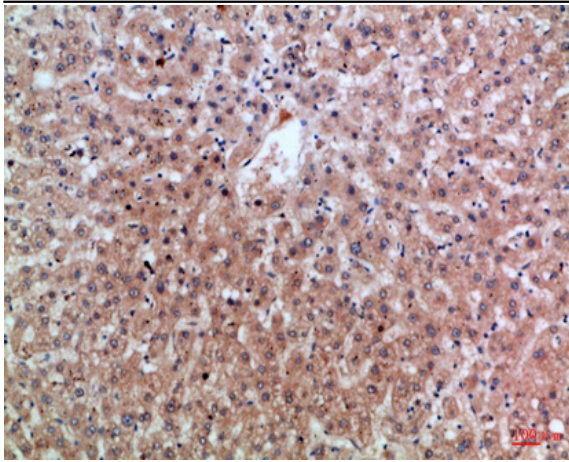
Sort : 5671

No4 : 1

Host : Rabbit

Modifications : Unmodified

Products Images



Immunohistochemical analysis of paraffin-embedded Human-liver, antibody was diluted at 1:100