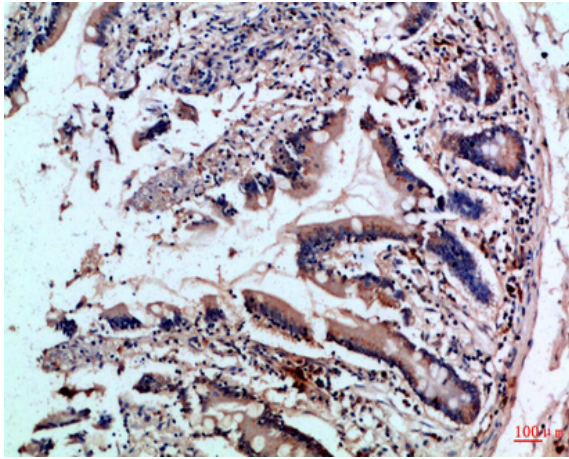


CD242 Polyclonal Antibody

Catalog No :	YT6041
Reactivity :	Human;Mouse
Applications :	IHC;IF;ELISA
Target :	CD242
Gene Name :	ICAM4 LW
Protein Name :	Intercellular adhesion molecule 4 (ICAM-4) (Landsteiner-Wiener blood group glycoprotein) (LW blood group protein) (CD antigen CD242)
Human Gene Id :	3386
Human Swiss Prot No :	Q14773
Mouse Gene Id :	78369
Mouse Swiss Prot No :	Q9ERM2
Immunogen :	Synthetic peptide from human protein at AA range: 141-190
Specificity :	The antibody detects endogenous CD242
Formulation :	Liquid in PBS containing 50% glycerol, 0.5% BSA and 0.02% sodium azide.
Source :	Polyclonal, Rabbit,IgG
Dilution :	IHC 1:50-200, ELISA 1:10000-20000. IF 1:50-200
Purification :	The antibody was affinity-purified from rabbit antiserum by affinity-chromatography using epitope-specific immunogen.
Concentration :	1 mg/ml
Storage Stability :	-15°C to -25°C/1 year(Do not lower than -25°C)

Background :	This gene encodes the Landsteiner-Wiener (LW) blood group antigen(s) that belongs to the immunoglobulin (Ig) superfamily, and that shares similarity with the intercellular adhesion molecule (ICAM) protein family. This ICAM protein contains 2 Ig-like C2-type domains and binds to the leukocyte adhesion LFA-1 protein. The molecular basis of the LW(A)/LW(B) blood group antigens is a single aa variation at position 100; Gln-100=LW(A) and Arg-100=LW(B). Alternative splicing results in multiple transcript variants encoding distinct isoforms. [provided by RefSeq, Jul 2008],
Function :	function:ICAM proteins are ligands for the leukocyte adhesion protein LFA-1 (integrin alpha-L/beta-2). ICAM4 is also a ligand for alpha-4/beta-1 and alpha-V integrins.,online information:Blood group antigen gene mutation database,polymorphism:Responsible for the Landsteiner-Wiener blood group system. The molecular basis of the LW(A)=LW5/LW(B)=LW7 blood group antigens is a single variation in position 100; Gln-100 corresponds to LW(A) and Arg-100 to LW(B).,PTM:N- and O-glycosylated.,similarity:Belongs to the immunoglobulin superfamily. ICAM family.,similarity:Contains 2 Ig-like C2-type (immunoglobulin-like) domains.,tissue specificity:Erythrocytes.,
Subcellular Location :	[Isoform Long]: Cell membrane; Single-pass type I membrane protein.; [Isoform Short]: Secreted .; Cell membrane ; Single-pass type I membrane protein .
Expression :	Erythrocytes.
Sort :	3492
No4 :	1
Host :	Rabbit
Modifications :	Unmodified

Products Images



Immunohistochemical analysis of paraffin-embedded Human-colon, antibody was diluted at 1:100