

## CD300a Polyclonal Antibody

<b>Catalog No :</b>	YT6036
<b>Reactivity :</b>	Human;Rat;Mouse;
<b>Applications :</b>	IHC;IF;ELISA
<b>Target :</b>	CD300a
<b>Gene Name :</b>	CD300A CMRF35H IGSF12 HSPC083
<b>Protein Name :</b>	CMRF35-like molecule 8 (CLM-8) (CD300 antigen-like family member A) (CMRF-35-H9) (CMRF35-H9) (CMRF35-H) (IRC1/IRC2) (Immunoglobulin superfamily member 12) (IgSF12) (Inhibitory receptor protein 60) (IR
<b>Human Gene Id :</b>	11314
<b>Human Swiss Prot No :</b>	Q9UGN4
<b>Mouse Gene Id :</b>	217303
<b>Mouse Swiss Prot No :</b>	Q6SJQ0
<b>Immunogen :</b>	Synthetic peptide from human protein at AA range: 141-190
<b>Specificity :</b>	The antibody detects endogenous CD300a
<b>Formulation :</b>	Liquid in PBS containing 50% glycerol, 0.5% BSA and 0.02% sodium azide.
<b>Source :</b>	Polyclonal, Rabbit,IgG
<b>Dilution :</b>	IHC 1:50-200, ELISA 1:10000-20000. IF 1:50-200
<b>Purification :</b>	The antibody was affinity-purified from rabbit antiserum by affinity-chromatography using epitope-specific immunogen.
<b>Concentration :</b>	1 mg/ml
<b>Storage Stability :</b>	-15°C to -25°C/1 year(Do not lower than -25°C)

**Background :** CD300a molecule(CD300A) Homo sapiens This gene encodes a member of the CD300 glycoprotein family of cell surface proteins found on leukocytes involved in immune response signaling pathways. This gene is located on chromosome 17 in a cluster with all but one of the other family members. Multiple transcript variants encoding different isoforms have been found for this gene. [provided by RefSeq, Feb 2012],

**Function :** function:Inhibitory receptor which may contribute to the down-regulation of cytolytic activity in natural killer (NK) cells, and to the down-regulation of mast cell degranulation.,PTM:Phosphorylated on tyrosine.,similarity:Belongs to the CD300 family.,similarity:Contains 1 Ig-like V-type (immunoglobulin-like) domain.,subunit:Upon tyrosine-phosphorylation, interacts with PTN6/SHP-1 and PTPN11/SHP-2 and INPP5D.,tissue specificity:Expressed not only by natural killer (NK) cells but also by T-cell subsets, B-cells, dendritic cells, mast cells, granulocytes and monocytes.,

**Subcellular Location :** Cell membrane ; Single-pass type I membrane protein .

**Expression :** Expressed not only by natural killer (NK) cells but also by T-cell subsets, B-cells, dendritic cells, mast cells, granulocytes and monocytes.

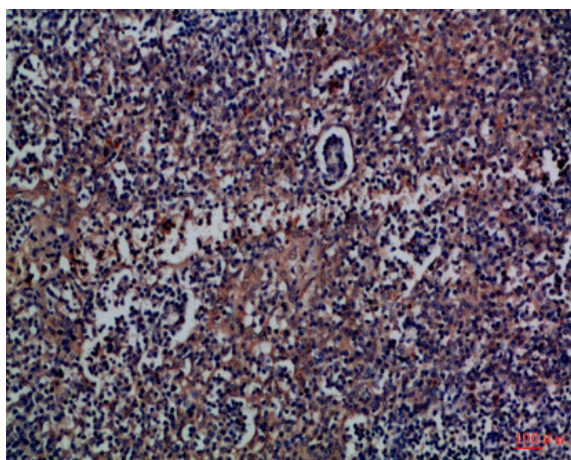
**Sort :** 3515

**No4 :** 1

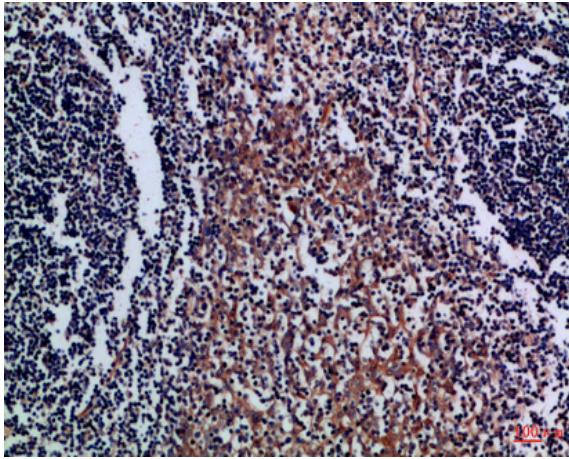
**Host :** Rabbit

**Modifications :** Unmodified

## Products Images



Immunohistochemical analysis of paraffin-embedded Human tonsil, antibody was diluted at 1:100



Immunohistochemical analysis of paraffin-embedded Human-tonsil, antibody was diluted at 1:100