

**TIMP-4 Polyclonal Antibody**

<b>Catalog No :</b>	YT5799
<b>Reactivity :</b>	Human;Rat;Mouse;
<b>Applications :</b>	WB;ELISA;IHC
<b>Target :</b>	TIMP-4
<b>Gene Name :</b>	TIMP4
<b>Protein Name :</b>	TIMP-4
<b>Human Gene Id :</b>	7079
<b>Human Swiss Prot No :</b>	Q99727
<b>Mouse Gene Id :</b>	110595
<b>Mouse Swiss Prot No :</b>	Q9JHB3
<b>Immunogen :</b>	Synthesized peptide derived from TIMP-4 at AA range: 174-223
<b>Specificity :</b>	TIMP-4 Polyclonal Antibody detects endogenous levels of TIMP-4
<b>Formulation :</b>	Liquid in PBS containing 50% glycerol, 0.5% BSA and 0.02% sodium azide.
<b>Source :</b>	Polyclonal, Rabbit,IgG
<b>Dilution :</b>	WB 1:500-2000;IHC 1:50-300; ELISA 2000-20000
<b>Purification :</b>	The antibody was affinity-purified from rabbit antiserum by affinity-chromatography using epitope-specific immunogen.
<b>Concentration :</b>	1 mg/ml
<b>Storage Stability :</b>	-15°C to -25°C/1 year(Do not lower than -25°C)

**Observed Band :** 26kD

**Background :** This gene belongs to the TIMP gene family. The proteins encoded by this gene family are inhibitors of the matrix metalloproteinases, a group of peptidases involved in degradation of the extracellular matrix. The secreted, netrin domain-containing protein encoded by this gene is involved in regulation of platelet aggregation and recruitment and may play role in hormonal regulation and endometrial tissue remodeling. [provided by RefSeq, Jul 2008],

**Function :** function:Complexes with metalloproteinases (such as collagenases) and irreversibly inactivates them. Known to act on MMP-1, MMP-2, MMP-3, MMP-7 and MMP-9.,similarity:Belongs to the protease inhibitor I35 (TIMP) family.,similarity:Contains 1 NTR domain.,tissue specificity:Abundant in heart and present at low levels in many other tissues.,

**Subcellular Location :** Secreted.

**Location :**

**Expression :** Abundant in heart and present at low levels in many other tissues.

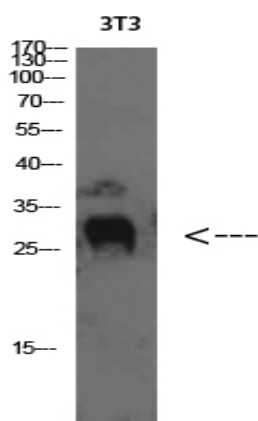
**Sort :** 17168

**No4 :** 1

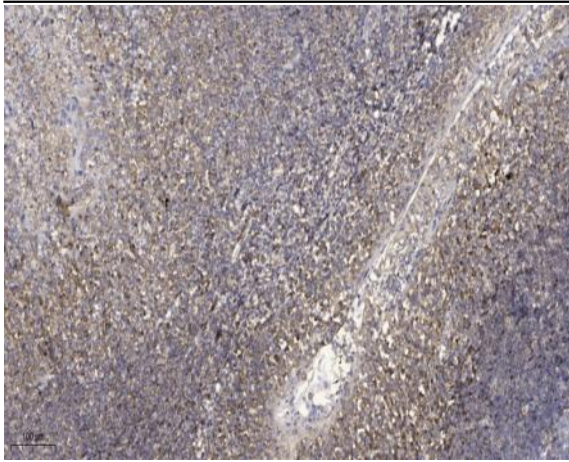
**Host :** Rabbit

**Modifications :** Unmodified

## Products Images



Western Blot analysis of 3T3 cells using TIMP-4 Polyclonal Antibody diluted at 1:800. Secondary antibody(catalog#:RS0002) was diluted at 1:20000



Immunohistochemical analysis of paraffin-embedded human tonsil. 1, Antibody was diluted at 1:200(4° overnight). 2, Tris-EDTA,pH9.0 was used for antigen retrieval. 3,Secondary antibody was diluted at 1:200(room temperature, 45min).