

## CD52 Polyclonal Antibody

<b>Catalog No :</b>	YT6029
<b>Reactivity :</b>	Human;Rat;Mouse;
<b>Applications :</b>	IHC;IF;ELISA
<b>Target :</b>	CD52
<b>Gene Name :</b>	CD52 CDW52 HE5
<b>Protein Name :</b>	CAMPATH-1 antigen (CDw52) (Cambridge pathology 1 antigen) (Epididymal secretory protein E5) (Human epididymis-specific protein 5) (He5) (CD antigen CD52)
<b>Human Gene Id :</b>	1043
<b>Human Swiss Prot No :</b>	P31358
<b>Mouse Gene Id :</b>	23833
<b>Mouse Swiss Prot No :</b>	Q64389
<b>Immunogen :</b>	Synthetic peptide from human protein at AA range: 20-50
<b>Specificity :</b>	The antibody detects endogenous CD52
<b>Formulation :</b>	Liquid in PBS containing 50% glycerol, 0.5% BSA and 0.02% sodium azide.
<b>Source :</b>	Polyclonal, Rabbit,IgG
<b>Dilution :</b>	IHC 1:50-200, ELISA 1:10000-20000. IF 1:50-200
<b>Purification :</b>	The antibody was affinity-purified from rabbit antiserum by affinity-chromatography using epitope-specific immunogen.
<b>Concentration :</b>	1 mg/ml
<b>Storage Stability :</b>	-15°C to -25°C/1 year(Do not lower than -25°C)

---

**Observed Band :** 15-20kD

---

**Background :** function:May play a role in carrying and orienting carbohydrate, as well as having a more specific role.,

---

**Function :** function:May play a role in carrying and orienting carbohydrate, as well as having a more specific role.,

---

**Subcellular Location :** Cell membrane; Lipid-anchor, GPI-anchor.

---

**Expression :** Epididymis,Lymph,Spleen,

---

**Sort :** 3606

---

**No4 :** 1

---

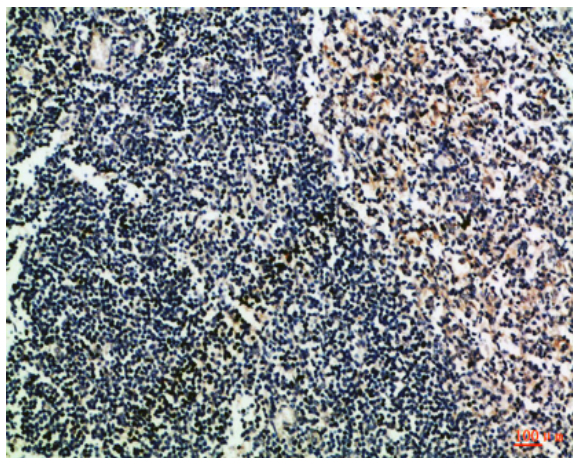
**Host :** Rabbit

---

**Modifications :** Unmodified

---

## Products Images



Immunohistochemical analysis of paraffin-embedded Human tonsil, antibody was diluted at 1:100