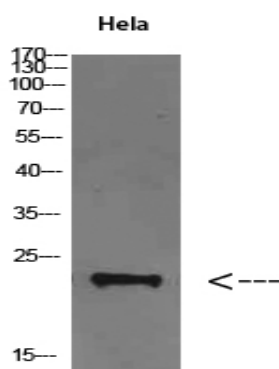


FAM3D Polyclonal Antibody

Catalog No :	YT5778
Reactivity :	Human;Mouse
Applications :	WB;ELISA
Target :	FAM3D
Gene Name :	FAM3D
Protein Name :	FAM3D
Human Gene Id :	131177
Human Swiss Prot No :	Q96BQ1
Mouse Gene Id :	18300
Mouse Swiss Prot No :	P97805
Immunogen :	The antiserum was produced against synthesized peptide derived from the Internal region of human FAM3D. AA range:121-170
Specificity :	FAM3D Polyclonal Antibody detects endogenous levels of FAM3D
Formulation :	Liquid in PBS containing 50% glycerol, 0.5% BSA and 0.02% sodium azide.
Source :	Polyclonal, Rabbit,IgG
Dilution :	WB 1:500-2000, ELISA 1:10000-20000
Purification :	The antibody was affinity-purified from rabbit antiserum by affinity-chromatography using epitope-specific immunogen.
Concentration :	1 mg/ml
Storage Stability :	-15°C to -25°C/1 year(Do not lower than -25°C)

Observed Band :	22kD
Background :	similarity:Belongs to the FAM3 family.,tissue specificity:Abundantly expressed in placenta and weakly expressed in small intestine.,
Function :	similarity:Belongs to the FAM3 family.,tissue specificity:Abundantly expressed in placenta and weakly expressed in small intestine.,
Subcellular Location :	Secreted .
Expression :	Abundantly expressed in placenta and weakly expressed in small intestine.
Sort :	5934
No4 :	1
Host :	Rabbit
Modifications :	Unmodified

Products Images



Western Blot analysis of HeLa cells using FAM3D Polyclonal Antibody diluted at 1:500. Secondary antibody(catalog#:RS0002) was diluted at 1:20000