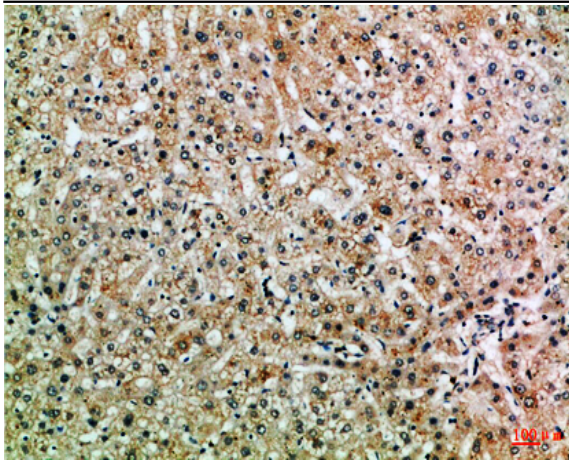


ASPP1 Polyclonal Antibody

Catalog No :	YT6010
Reactivity :	Human;Mouse
Applications :	IHC;IF;ELISA
Target :	ASPP1
Gene Name :	PPP1R13B ASPP1 KIAA0771
Protein Name :	Apoptosis-stimulating of p53 protein 1 (Protein phosphatase 1 regulatory subunit 13B)
Human Gene Id :	23368
Human Swiss Prot No :	Q96KQ4
Mouse Gene Id :	21981
Mouse Swiss Prot No :	Q62415
Immunogen :	Synthetic peptide from human protein at AA range: 630-680
Specificity :	The antibody detects endogenous ASPP1
Formulation :	Liquid in PBS containing 50% glycerol, 0.5% BSA and 0.02% sodium azide.
Source :	Polyclonal, Rabbit,IgG
Dilution :	IHC 1:50-200, ELISA 1:10000-20000. IF 1:50-200
Purification :	The antibody was affinity-purified from rabbit antiserum by affinity-chromatography using epitope-specific immunogen.
Concentration :	1 mg/ml
Storage Stability :	-15°C to -25°C/1 year(Do not lower than -25°C)

Background :	This gene encodes a member of the ASPP (apoptosis-stimulating protein of p53) family of p53 interacting proteins. The protein contains four ankyrin repeats and an SH3 domain involved in protein-protein interactions. ASPP proteins are required for the induction of apoptosis by p53-family proteins. They promote DNA binding and transactivation of p53-family proteins on the promoters of proapoptotic genes. Expression of this gene is regulated by the E2F transcription factor. [provided by RefSeq, Jul 2008],
Function :	disease:Defects in PPP1R13B may be a cause of breast cancers. It is overexpressed in many patients suffering from breast carcinomas and expressing a wild-type TP53 protein.,domain:The ankyrin repeats and the SH3 domain are required for specific interactions with TP53.,function:Regulator that plays a central role in regulation of apoptosis via its interaction with p53/TP53. Regulates TP53 by enhancing the DNA binding and transactivation function of TP53 on the promoters of proapoptotic genes in vivo.,miscellaneous:In contrast to its official gene name, it is not a regulatory subunit of protein phosphatase 1. This name was given due to its similarity with a protein that binds to protein phosphatase 1.,similarity:Belongs to the ASPP family.,similarity:Contains 1 SH3 domain.,similarity:Contains 2 ANK repeats.,subcellular location:Predominantly cytoplasmic. Some fraction is nuclear.,subunit:l
Subcellular Location :	Cytoplasm . Nucleus . Predominantly cytoplasmic. Some fraction is nuclear.
Expression :	Reduced expression in breast carcinomas expressing a wild-type TP53 protein.
Sort :	2334
No4 :	1
Host :	Rabbit
Modifications :	Unmodified

Products Images



Immunohistochemical analysis of paraffin-embedded Human-liver, antibody was diluted at 1:100