

ATG10 Polyclonal Antibody

Catalog No :	YT6005
Reactivity :	Human;Mouse
Applications :	IHC;IF;ELISA
Target :	ATG10
Fields :	>>Autophagy - other;>>Autophagy - animal
Gene Name :	ATG10 APG10L PP12616
Protein Name :	Ubiquitin-like-conjugating enzyme ATG10 (EC 6.3.2.-) (Autophagy-related protein 10) (APG10-like)
Human Gene Id :	83734
Human Swiss Prot No :	Q9H0Y0
Mouse Gene Id :	66795
Mouse Swiss Prot No :	Q8R1P4
Immunogen :	Synthetic peptide from human protein at AA range: 1-50
Specificity :	The antibody detects endogenous ATG10
Formulation :	Liquid in PBS containing 50% glycerol, 0.5% BSA and 0.02% sodium azide.
Source :	Polyclonal, Rabbit,IgG
Dilution :	IHC 1:50-200, ELISA 1:10000-20000. IF 1:50-200
Purification :	The antibody was affinity-purified from rabbit antiserum by affinity-chromatography using epitope-specific immunogen.
Concentration :	1 mg/ml

Storage Stability : -15°C to -25°C/1 year(Do not lower than -25°C)

Background : Autophagy is a process for the bulk degradation of cytosolic compartments by lysosomes. ATG10 is an E2-like enzyme involved in 2 ubiquitin-like modifications essential for autophagosome formation: ATG12 (MIM 609608)-ATG5 (MIM 604261) conjugation and modification of a soluble form of MAP-LC3 (MAP1LC3A; MIM 601242), a homolog of yeast Apg8, to a membrane-bound form (Nemoto et al., 2003 [PubMed 12890687]).[supplied by OMIM, Mar 2008],

Function : function:Plays a role in autophagy (By similarity). ATG12-conjugating enzyme (E2-like enzyme), likely serves as an ATG5-recognition molecule.,similarity:Belongs to the ATG10 family.,subunit:Interacts with MAP1LC3A. By interacting with MAP1LC3A, it plays a role in the conjugation of ATG12 to ATG5. Also able to directly interact either with ATG5 or ATG7.,

Subcellular Location : Cytoplasm .

Expression :

Placenta,Testis,Thymus,Uterus,

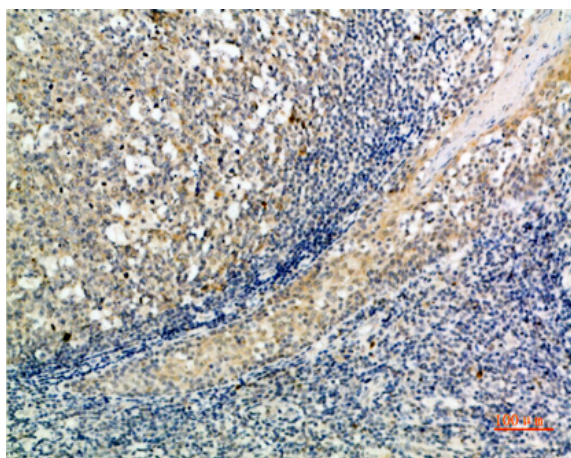
Sort : 2373

No4 : 1

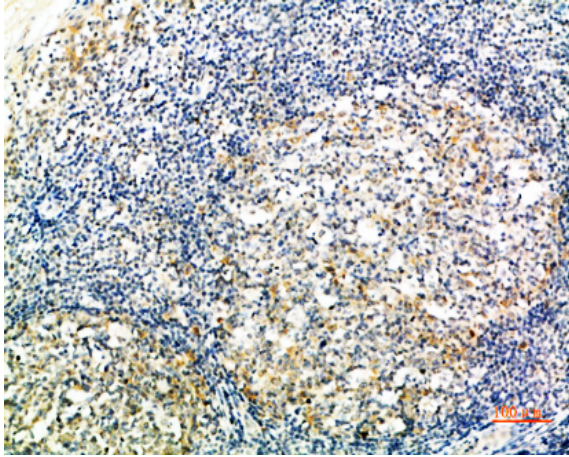
Host : Rabbit

Modifications : Unmodified

Products Images



Immunohistochemical analysis of paraffin-embedded human-tonsil, antibody was diluted at 1:200



Immunohistochemical analysis of paraffin-embedded human-tonsil, antibody was diluted at 1:200