

PACAP Polyclonal Antibody

Catalog No :	YT5998
Reactivity :	Human;Rat;Mouse;
Applications :	IHC;IF;ELISA
Target :	PACAP
Gene Name :	PACAP HSPC190
Protein Name :	Plasma cell-induced resident endoplasmic reticulum protein (Plasma cell-induced resident ER protein) (pERp1) (Proapoptotic caspase adapter protein)
Human Gene Id :	51237
Human Swiss Prot No :	Q8WU39
Mouse Gene Id :	69816
Mouse Swiss Prot No :	Q9D8I1
Immunogen :	Synthetic peptide from human protein at AA range: 1-50
Specificity :	The antibody detects endogenous PACAP
Formulation :	Liquid in PBS containing 50% glycerol, 0.5% BSA and 0.02% sodium azide.
Source :	Polyclonal, Rabbit,IgG
Dilution :	IHC 1:50-200, ELISA 1:10000-20000. IF 1:50-200
Purification :	The antibody was affinity-purified from rabbit antiserum by affinity-chromatography using epitope-specific immunogen.
Concentration :	1 mg/ml
Storage Stability :	-15°C to -25°C/1 year(Do not lower than -25°C)

Background : function:May be involved in regulation of apoptosis.,induction:Down-regulated in primary B-cells early after ligand-stimulated activation.,subcellular location:In (PubMed:11350957) diffuse granular localization in the cytoplasm surrounding the nucleus.,subunit:Isoform 2 interacts with CASP2 and CASP9.,tissue specificity:Widely expressed with highest levels in adult brain. Expression is frequently lower in intestinal-type gastric cancer.,

Function : function:May be involved in regulation of apoptosis.,induction:Down-regulated in primary B-cells early after ligand-stimulated activation.,subcellular location:In (PubMed:11350957) diffuse granular localization in the cytoplasm surrounding the nucleus.,subunit:Isoform 2 interacts with CASP2 and CASP9.,tissue specificity:Widely expressed with highest levels in adult brain. Expression is frequently lower in intestinal-type gastric cancer.,

Subcellular Location : [Isoform 1]: Endoplasmic reticulum lumen . Secreted .; [Isoform 2]: Cytoplasm . Diffuse granular localization in the cytoplasm surrounding the nucleus (PubMed:11350957).

Expression : Widely expressed with highest levels in adult brain, small intestine and lymphoid tissues such as thymus and spleen. Expression is frequently lower in intestinal-type gastric cancer. In obese patients, more abundant in omental than in subcutaneous fat.

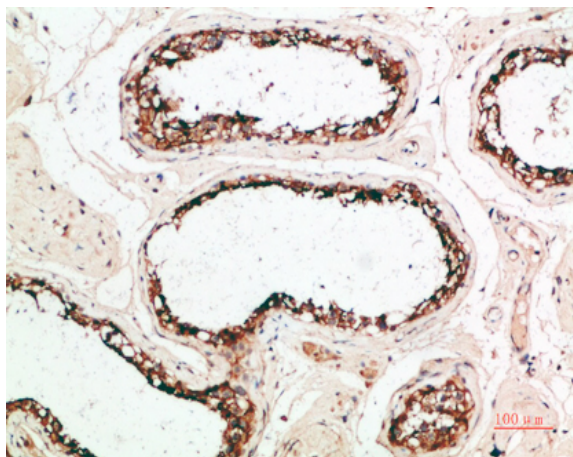
Sort : 11568

No4 : 1

Host : Rabbit

Modifications : Unmodified

Products Images



Immunohistochemical analysis of paraffin-embedded human-testis, antibody was diluted at 1:200