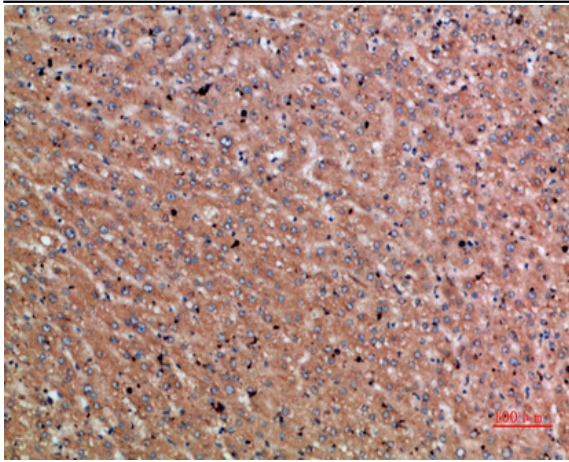


Chordin Polyclonal Antibody

Catalog No :	YT5996
Reactivity :	Human;Mouse;Rat
Applications :	IHC;IF;ELISA
Target :	Chordin
Fields :	>>TGF-beta signaling pathway
Gene Name :	CHRD UNQ217/PRO243
Protein Name :	Chordin
Human Gene Id :	8646
Human Swiss Prot No :	Q9H2X0
Mouse Gene Id :	12667
Mouse Swiss Prot No :	Q9Z0E2
Rat Swiss Prot No :	Q63148
Immunogen :	The antiserum was produced against synthesized peptide derived from the C-terminal region of human CHRD. AA range:905-954
Specificity :	The antibody detects endogenous Chordin
Formulation :	Liquid in PBS containing 50% glycerol, 0.5% BSA and 0.02% sodium azide.
Source :	Polyclonal, Rabbit,IgG
Dilution :	IHC 1:50-200, ELISA 1:10000-20000. IF 1:50-200
Purification :	The antibody was affinity-purified from rabbit antiserum by affinity-chromatography using epitope-specific immunogen.

Concentration :	1 mg/ml
Storage Stability :	-15°C to -25°C/1 year(Do not lower than -25°C)
Cell Pathway :	TGF-beta;
Background :	<p>This gene encodes a secreted protein that dorsalizes early vertebrate embryonic tissues by binding to ventralizing TGF-beta-like bone morphogenetic proteins and sequestering them in latent complexes. The encoded protein may also have roles in organogenesis and during adulthood. It has been suggested that this gene could be a candidate gene for Cornelia de Lange syndrome. Reduced expression of this gene results in enhanced bone regeneration. Alternative splicing results in multiple transcript variants. Other alternative splice variants have been described but their full length sequence has not been determined. [provided by RefSeq, Jan 2015],</p>
Function :	<p>alternative products:Experimental confirmation may be lacking for some isoforms,function:Dorsalizing factor. Key developmental protein that dorsalizes early vertebrate embryonic tissues by binding to ventralizing TGF-beta family bone morphogenetic proteins (BMPs) and sequestering them in latent complexes.,PTM:Cleaved by tolloid proteases; cleavage participates to dorsoventral patterning during early development.,similarity:Belongs to the chordin family.,similarity:Contains 4 CHRD domains.,similarity:Contains 4 VWFC domains.,subunit:Interacts with TWSG1 and/or BMP4.,tissue specificity:Expressed at the highest level in liver.,</p>
Subcellular Location :	Secreted .
Expression :	Expressed at the highest level in liver.
Sort :	3965
No4 :	1
Host :	Rabbit
Modifications :	Unmodified

Products Images



Immunohistochemical analysis of paraffin-embedded human-liver-cancer, antibody was diluted at 1:200