

GSC Polyclonal Antibody

Catalog No :	YT5994
Reactivity :	Human;Mouse;Rat
Applications :	IHC;IF;ELISA
Target :	GSC
Gene Name :	GSC
Protein Name :	Homeobox protein gooseoid
Human Gene Id :	145258
Human Swiss Prot No :	P56915
Mouse Gene Id :	14836
Mouse Swiss Prot No :	Q02591
Immunogen :	Synthetic peptide from human protein at AA range: 207-256
Specificity :	The antibody detects endogenous GSC
Formulation :	Liquid in PBS containing 50% glycerol, 0.5% BSA and 0.02% sodium azide.
Source :	Polyclonal, Rabbit,IgG
Dilution :	IHC 1:50-200, ELISA 1:10000-20000. IF 1:50-200
Purification :	The antibody was affinity-purified from rabbit antiserum by affinity-chromatography using epitope-specific immunogen.
Concentration :	1 mg/ml
Storage Stability :	-15°C to -25°C/1 year(Do not lower than -25°C)

Background : goosecoid homeobox(GSC) Homo sapiens This gene encodes a member of the bicoid subfamily of the paired (PRD) homeobox family of proteins. The encoded protein acts as a transcription factor and may be autoregulatory. A similar protein in mice plays a role in craniofacial and rib cage development during embryogenesis. [provided by RefSeq, Jul 2008],

Function : function:Regulates chordin (CHRD). May play a role in spatial programming within discrete embryonic fields or lineage compartments during organogenesis.,similarity:Belongs to the paired homeobox family. Bicoid subfamily.,similarity:Contains 1 homeobox DNA-binding domain.,

Subcellular Location : Nucleus.

Expression : Bone,Leukocyte,Testis,

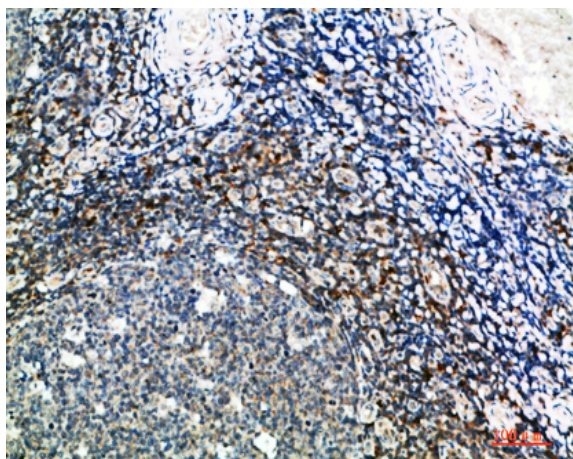
Sort : 7157

No4 : 1

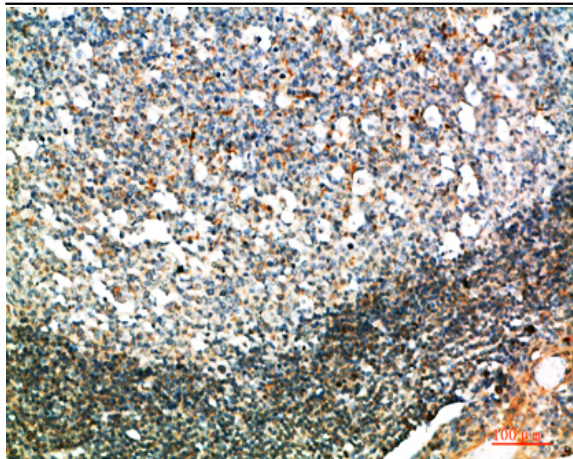
Host : Rabbit

Modifications : Unmodified

Products Images



Immunohistochemical analysis of paraffin-embedded human-tonsil, antibody was diluted at 1:200



Immunohistochemical analysis of paraffin-embedded human-tonsil, antibody was diluted at 1:200