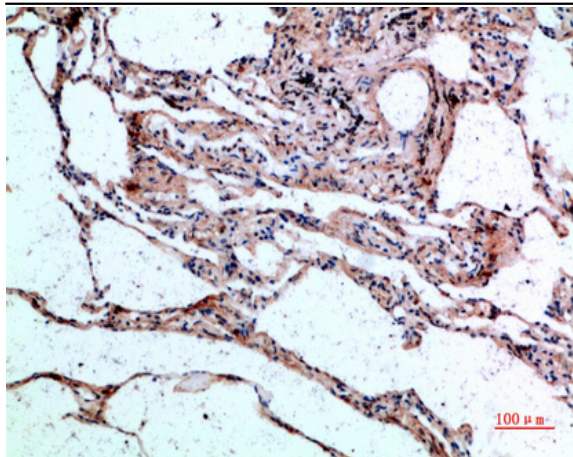


CTGF Polyclonal Antibody

Catalog No :	YT5991
Reactivity :	Human;Mouse;Rat
Applications :	IHC;IF;ELISA
Target :	CTGF
Fields :	>>Apelin signaling pathway;>>Hippo signaling pathway
Gene Name :	CTGF CCN2 HCS24 IGFBP8
Protein Name :	Connective tissue growth factor (CCN family member 2) (Hypertrophic chondrocyte-specific protein 24) (Insulin-like growth factor-binding protein 8) (IBP-8) (IGF-binding protein 8) (IGFBP-8)
Human Gene Id :	1490
Human Swiss Prot No :	P29279
Mouse Gene Id :	14219
Mouse Swiss Prot No :	P29268
Rat Swiss Prot No :	Q9R1E9
Immunogen :	Synthetic peptide from human protein at AA range: 141-190
Specificity :	The antibody detects endogenous CTGF
Formulation :	Liquid in PBS containing 50% glycerol, 0.5% BSA and 0.02% sodium azide.
Source :	Polyclonal, Rabbit,IgG
Dilution :	IHC 1:50-200, ELISA 1:10000-20000. IF 1:50-200
Purification :	The antibody was affinity-purified from rabbit antiserum by affinity-chromatography using epitope-specific immunogen.

Concentration :	1 mg/ml
Storage Stability :	-15°C to -25°C/1 year(Do not lower than -25°C)
Background :	The protein encoded by this gene is a mitogen that is secreted by vascular endothelial cells. The encoded protein plays a role in chondrocyte proliferation and differentiation, cell adhesion in many cell types, and is related to platelet-derived growth factor. Certain polymorphisms in this gene have been linked with a higher incidence of systemic sclerosis. [provided by RefSeq, Nov 2009],
Function :	function:Major connective tissue mitogen secreted by vascular endothelial cells. Promotes proliferation and differentiation of chondrocytes. Mediates heparin- and divalent cation-dependent cell adhesion in many cell types including fibroblasts, myofibroblasts, endothelial and epithelial cells. Enhances fibroblast growth factor-induced DNA synthesis.,similarity:Belongs to the CCN family.,similarity:Contains 1 CTCK (C-terminal cystine knot-like) domain.,similarity:Contains 1 IGFBP N-terminal domain.,similarity:Contains 1 TSP type-1 domain.,similarity:Contains 1 VWFC domain.,subunit:Monomer.,
Subcellular Location :	Secreted, extracellular space, extracellular matrix . Secreted .
Expression :	Expressed in bone marrow and thymic cells. Also expressed one of two Wilms tumors tested.
Tag :	hot
Sort :	4660
No1 :	ab6992
No2 :	ab6992
No4 :	1
Host :	Rabbit
Modifications :	Unmodified

Products Images



Immunohistochemical analysis of paraffin-embedded human-lung, antibody was diluted at 1:200