

Calretinin Polyclonal Antibody

Catalog No :	YT5741
Reactivity :	Human;Mouse;Rat
Applications :	WB;IHC;IF;ELISA
Target :	Calretinin
Gene Name :	CALB2
Protein Name :	calbindin 2
Human Gene Id :	794
Human Swiss Prot No :	P22676
Mouse Gene Id :	12308
Mouse Swiss Prot No :	Q08331
Rat Swiss Prot No :	P47728
Immunogen :	Synthesized peptide derived from calbindin 2 at AA range: 191-240
Specificity :	Calretinin Polyclonal Antibody detects endogenous levels of calbindin 2
Formulation :	Liquid in PBS containing 50% glycerol, 0.5% BSA and 0.02% sodium azide.
Source :	Polyclonal, Rabbit,IgG
Dilution :	WB 1:500 - 1:2000. ELISA: 1:10000.. IF 1:50-200
Purification :	The antibody was affinity-purified from rabbit antiserum by affinity-chromatography using epitope-specific immunogen.
Concentration :	1 mg/ml

Storage Stability : -15°C to -25°C/1 year(Do not lower than -25°C)

Observed Band : 32kD

Background : This gene encodes an intracellular calcium-binding protein belonging to the troponin C superfamily. Members of this protein family have six EF-hand domains which bind calcium. This protein plays a role in diverse cellular functions, including message targeting and intracellular calcium buffering. It also functions as a modulator of neuronal excitability, and is a diagnostic marker for some human diseases, including Hirschsprung disease and some cancers. Alternative splicing results in multiple transcript variants. [provided by RefSeq, Jun 2010],

Function : function:Calretinin is a calcium-binding protein which is abundant in auditory neurons.,online information:Calbindin entry,similarity:Belongs to the calbindin family.,similarity:Contains 6 EF-hand domains.,tissue specificity:Brain.,

Subcellular Location : nucleus,cytoplasm,cytosol,gap junction,neuron projection,terminal bouton,synapse,

Expression : Brain.

Tag : hot

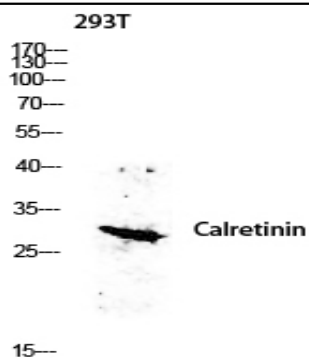
Sort : 3086

No4 : 1

Host : Rabbit

Modifications : Unmodified

Products Images



Western blot analysis of 293T lysis using CALB2 antibody.
Antibody was diluted at 1:500. Secondary
antibody(catalog#:RS0002) was diluted at 1:20000