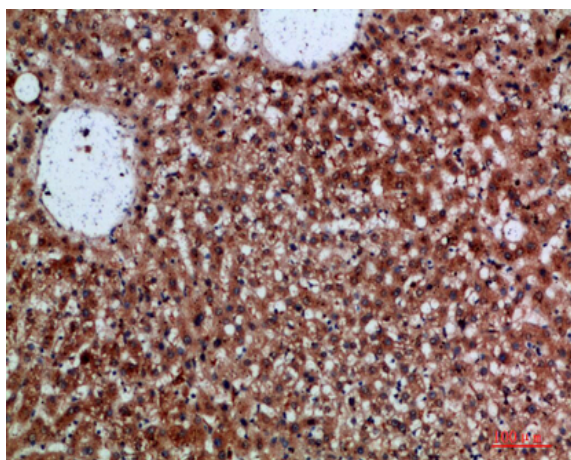


CDNF Polyclonal Antibody

Catalog No :	YT5969
Reactivity :	Human;Rat;Mouse;
Applications :	IHC;IF;ELISA
Target :	CDNF
Gene Name :	CDNF ARMETL1
Protein Name :	Cerebral dopamine neurotrophic factor (ARMET-like protein 1) (Conserved dopamine neurotrophic factor)
Human Gene Id :	441549
Human Swiss Prot No :	Q49AH0
Mouse Gene Id :	227526
Mouse Swiss Prot No :	Q8CC36
Immunogen :	Synthetic peptide from human protein at AA range: 31-80
Specificity :	The antibody detects endogenous CDNF
Formulation :	Liquid in PBS containing 50% glycerol, 0.5% BSA and 0.02% sodium azide.
Source :	Polyclonal, Rabbit,IgG
Dilution :	IHC 1:50-200, ELISA 1:10000-20000. IF 1:50-200
Purification :	The antibody was affinity-purified from rabbit antiserum by affinity-chromatography using epitope-specific immunogen.
Concentration :	1 mg/ml
Storage Stability :	-15°C to -25°C/1 year(Do not lower than -25°C)

Background :	CDNF (Cerebral Dopamine Neurotrophic Factor) is a Protein Coding gene. Trophic factor for dopamine neurons. Prevents the 6-hydroxydopamine (6-OHDA)-induced degeneration of dopaminergic neurons. When administered after 6-OHDA-lesioning, restores the dopaminergic function and prevents the degeneration of dopaminergic neurons in substantia nigra (By similarity).
Subcellular Location :	Secreted .
Expression :	Widely expressed in neuronal and non-neuronal tissues. In the brain, highest levels in the optic nerve and corpus callosum.
Sort :	3813
No4 :	1
Host :	Rabbit
Modifications :	Unmodified

Products Images



Immunohistochemical analysis of paraffin-embedded human-liver, antibody was diluted at 1:200