

CD306 Polyclonal Antibody

Catalog No :	YT5718
Reactivity :	Human
Applications :	WB;ELISA
Target :	CD306
Gene Name :	LAIR2
Protein Name :	Leukocyte-associated immunoglobulin-like receptor 2
Human Gene Id :	3904
Human Swiss Prot No :	Q6ISS4
Immunogen :	The antiserum was produced against synthesized peptide derived from the Internal region of human LAIR2. AA range:21-70
Specificity :	CD306 Polyclonal Antibody detects endogenous levels of CD306 protein.
Formulation :	Liquid in PBS containing 50% glycerol, 0.5% BSA and 0.02% sodium azide.
Source :	Polyclonal, Rabbit,IgG
Dilution :	WB 1:500 - 1:2000. ELISA: 1:10000. Not yet tested in other applications.
Purification :	The antibody was affinity-purified from rabbit antiserum by affinity-chromatography using epitope-specific immunogen.
Concentration :	1 mg/ml
Storage Stability :	-15°C to -25°C/1 year(Do not lower than -25°C)
Observed Band :	20kD
Background :	The protein encoded by this gene is a member of the immunoglobulin superfamily. It was identified by its similarity to leukocyte-associated

immunoglobulin-like receptor 1, a membrane-bound receptor that modulates innate immune response. The protein encoded by this locus is a soluble receptor that may play roles in both inhibition of collagen-induced platelet aggregation and vessel formation during placental implantation. This gene maps to a region of 19q13.4, termed the leukocyte receptor cluster, which contains 29 genes in the immunoglobulin superfamily. Alternatively spliced transcript variants have been described for this gene. [provided by RefSeq, Sep 2013],

Function : alternative products:Named isoforms=2,similarity:Contains 1 Ig-like C2-type (immunoglobulin-like) domain.,

Subcellular Location : Secreted.

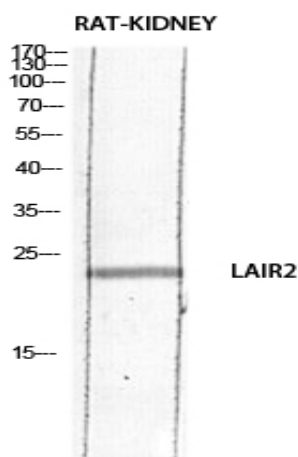
Sort : 3525

No4 : 1

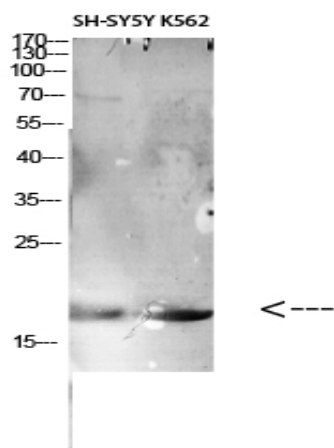
Host : Rabbit

Modifications : Unmodified

Products Images



Western blot analysis of RAT-KIDNEY lysis using LAIR2 antibody. Antibody was diluted at 1:1000. Secondary antibody(catalog#:RS0002) was diluted at 1:20000



Western Blot analysis of various cells using Antibody diluted at 1:1000. Secondary antibody(catalog#:RS0002) was diluted at 1:20000