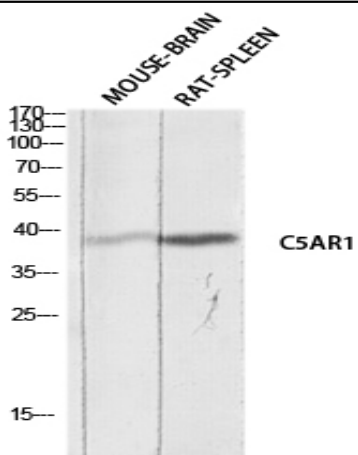


CD88 Polyclonal Antibody

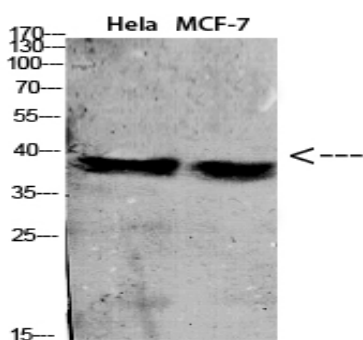
Catalog No :	YT5710
Reactivity :	Human;Rat;Mouse;
Applications :	WB;ELISA
Target :	CD88
Fields :	>>Neuroactive ligand-receptor interaction;>>Complement and coagulation cascades;>>Neutrophil extracellular trap formation;>>Alcoholic liver disease;>>Staphylococcus aureus infection;>>Coronavirus disease - COVID-19
Gene Name :	C5AR1
Protein Name :	C5a anaphylatoxin chemotactic receptor
Human Gene Id :	58503
Human Swiss Prot No :	P21730
Mouse Swiss Prot No :	P30993
Immunogen :	The antiserum was produced against synthesized peptide derived from the N-terminal region of human C5AR1. AA range:1-50
Specificity :	CD88 Polyclonal Antibody detects endogenous levels of CD88 protein.
Formulation :	Liquid in PBS containing 50% glycerol, 0.5% BSA and 0.02% sodium azide.
Source :	Polyclonal, Rabbit,IgG
Dilution :	WB 1:500 - 1:2000. ELISA: 1:10000. Not yet tested in other applications.
Purification :	The antibody was affinity-purified from rabbit antiserum by affinity-chromatography using epitope-specific immunogen.
Concentration :	1 mg/ml

Storage Stability :	-15°C to -25°C/1 year(Do not lower than -25°C)
Observed Band :	39kD
Cell Pathway :	Neuroactive ligand-receptor interaction;Complement and coagulation cascades;
Background :	function:Receptor for the chemotactic and inflammatory peptide anaphylatoxin C5a. This receptor stimulates chemotaxis, granule enzyme release and superoxide anion production.,PTM:Sulfation plays a critical role in the association of the receptor with C5a, but no significant role in the ability of the receptor to transduce a signal and mobilize calcium in response to a small peptide agonist.,similarity:Belongs to the G-protein coupled receptor 1 family.,
Function :	function:Receptor for the chemotactic and inflammatory peptide anaphylatoxin C5a. This receptor stimulates chemotaxis, granule enzyme release and superoxide anion production.,PTM:Sulfation plays a critical role in the association of the receptor with C5a, but no significant role in the ability of the receptor to transduce a signal and mobilize calcium in response to a small peptide agonist.,similarity:Belongs to the G-protein coupled receptor 1 family.,
Subcellular Location :	Cell membrane ; Multi-pass membrane protein . Cytoplasmic vesicle . Phosphorylated C5aR colocalizes with ARRB1 and ARRB2 in cytoplasmic vesicles. .
Expression :	Brain,
Sort :	3693
No4 :	1
Host :	Rabbit
Modifications :	Unmodified

Products Images



Western blot analysis of MOUSE-BRAIN RAT-SPLEEN lysis using C5AR1 antibody. Antibody was diluted at 1:1000. Secondary antibody(catalog#:RS0002) was diluted at 1:20000



Western Blot analysis of various cells using Antibody diluted at 1:1000. Secondary antibody(catalog#:RS0002) was diluted at 1:20000