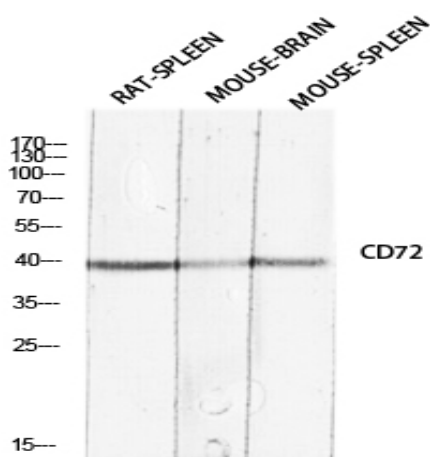


CD72 Polyclonal Antibody

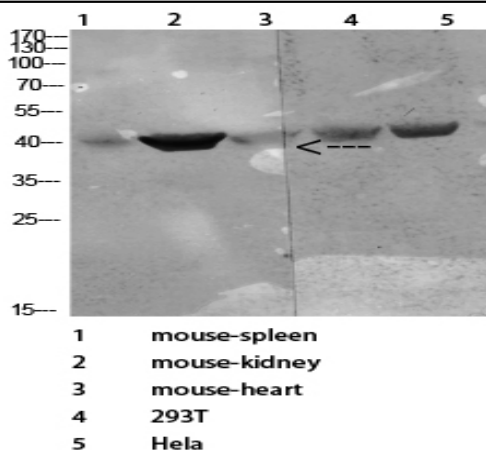
Catalog No :	YT5709
Reactivity :	Human;Mouse
Applications :	WB;IHC;IF;ELISA
Target :	CD72
Fields :	>>B cell receptor signaling pathway
Gene Name :	CD72
Protein Name :	B-cell differentiation antigen CD72
Human Gene Id :	971
Human Swiss Prot No :	P21854
Mouse Swiss Prot No :	P21855
Immunogen :	The antiserum was produced against synthesized peptide derived from the Internal region of human CD72. AA range:170-220
Specificity :	CD72 Polyclonal Antibody detects endogenous levels of CD72 protein.
Formulation :	Liquid in PBS containing 50% glycerol, 0.5% BSA and 0.02% sodium azide.
Source :	Polyclonal, Rabbit,IgG
Dilution :	IHC: 100-300.WB 1:500 - 1:2000. ELISA: 1:10000.. IF 1:50-200
Purification :	The antibody was affinity-purified from rabbit antiserum by affinity-chromatography using epitope-specific immunogen.
Concentration :	1 mg/ml
Storage Stability :	-15°C to -25°C/1 year(Do not lower than -25°C)

Observed Band :	40kD
Cell Pathway :	B_Cell_Antigen;
Background :	function:Plays a role in B-cell proliferation and differentiation. Associates with CD5.,online information:CD72,similarity:Contains 1 C-type lectin domain.,subunit:Homodimer; disulfide-linked.,tissue specificity:Pre-B-cells and B-cells but not terminally differentiated plasma cells.,
Function :	function:Plays a role in B-cell proliferation and differentiation. Associates with CD5.,online information:CD72,similarity:Contains 1 C-type lectin domain.,subunit:Homodimer; disulfide-linked.,tissue specificity:Pre-B-cells and B-cells but not terminally differentiated plasma cells.,
Subcellular Location :	Membrane; Single-pass type II membrane protein.
Expression :	Pre-B-cells and B-cells but not terminally differentiated plasma cells.
Sort :	3658
No4 :	1
Host :	Rabbit
Modifications :	Unmodified

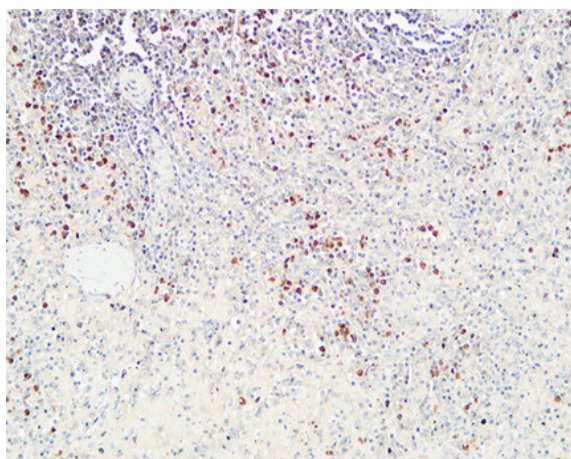
Products Images



Western blot analysis of RAT-SPLEEN MOUSE-BRAIN MOUSE-SPLEEN lysis using CD72 antibody. Antibody was diluted at 1:2000. Secondary antibody(catalog#:RS0002) was diluted at 1:20000



Western Blot analysis of various cells using Antibody diluted at 1:1000. Secondary antibody(catalog#:RS0002) was diluted at 1:20000



Immunohistochemical analysis of paraffin-embedded Human spleen. 1, Antibody was diluted at 1:100(4° overnight). 2, High-pressure and temperature EDTA, pH8.0 was used for antigen retrieval. 3,Secondary antibody was diluted at 1:200(room temperature, 30min).