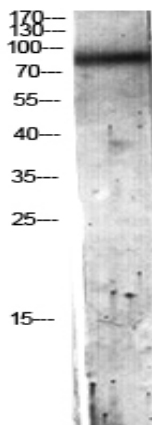


## C7 Polyclonal Antibody

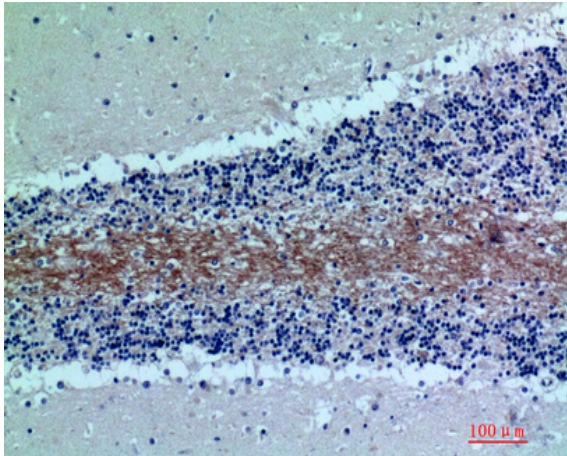
<b>Catalog No :</b>	YT5700
<b>Reactivity :</b>	Human
<b>Applications :</b>	WB;IHC;IF;ELISA
<b>Target :</b>	C7
<b>Fields :</b>	>>Complement and coagulation cascades;>>Prion disease;>>Coronavirus disease - COVID-19;>>Systemic lupus erythematosus
<b>Gene Name :</b>	C7
<b>Protein Name :</b>	Complement component C7
<b>Human Gene Id :</b>	730
<b>Human Swiss Prot No :</b>	P10643
<b>Immunogen :</b>	The antiserum was produced against synthesized peptide derived from the N-terminal region of human C7. AA range:100-150
<b>Specificity :</b>	C7 Polyclonal Antibody detects endogenous levels of C7 protein.
<b>Formulation :</b>	Liquid in PBS containing 50% glycerol, 0.5% BSA and 0.02% sodium azide.
<b>Source :</b>	Polyclonal, Rabbit,IgG
<b>Dilution :</b>	WB 1:500 - 1:2000. IHC: 1:100-1:300. ELISA: 1:10000.. IF 1:50-200
<b>Purification :</b>	The antibody was affinity-purified from rabbit antiserum by affinity-chromatography using epitope-specific immunogen.
<b>Concentration :</b>	1 mg/ml
<b>Storage Stability :</b>	-15°C to -25°C/1 year(Do not lower than -25°C)
<b>Observed Band :</b>	93kD

<b>Cell Pathway :</b>	Complement and coagulation cascades;Prion diseases;Systemic lupus erythematosus;
<b>Background :</b>	C7 is a component of the complement system. It participates in the formation of Membrane Attack Complex (MAC). People with C7 deficiency are prone to bacterial infection. [provided by RefSeq, Jul 2008],
<b>Function :</b>	disease:Defects in C7 are a cause of component C7 deficiency (C7D) [MIM:217070]. Patients with C7D suffer from recurrent bacterial infections, predominantly from Neisseria meningitidis.,function:C7 is a constituent of the membrane attack complex. C7 binds to C5b forming the C5b-7 complex, where it serves as a membrane anchor.,online information:C7 mutation db,PTM:C7 has 28 disulfide bridges.,similarity:Belongs to the complement C6/C7/C8/C9 family.,similarity:Contains 1 EGF-like domain.,similarity:Contains 1 LDL-receptor class A domain.,similarity:Contains 1 MACPF domain.,similarity:Contains 2 Sushi (CCP/SCR) domains.,similarity:Contains 2 TSP type-1 domains.,subunit:Monomer or dimer; as a C5b-7 complex it can also form multimeric rosettes.,
<b>Subcellular Location :</b>	Secreted.
<b>Expression :</b>	Liver,Placenta,Plasma,PNS,
<b>Sort :</b>	2951
<b>No4 :</b>	1
<b>Host :</b>	Rabbit
<b>Modifications :</b>	Unmodified

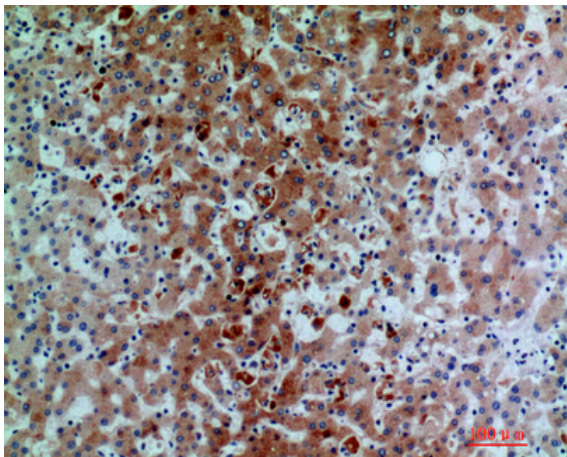
## Products Images



Western blot analysis of HeLa lysis using C7 antibody. Antibody was diluted at 1:500. Secondary antibody(catalog#:RS0002) was diluted at 1:20000



Immunohistochemical analysis of paraffin-embedded human-brain, antibody was diluted at 1:200



Immunohistochemical analysis of paraffin-embedded human-liver, antibody was diluted at 1:200