

Axl Polyclonal Antibody

| | |
|------------------------------|---|
| Catalog No : | YT5690 |
| Reactivity : | Human;Mouse;Rat |
| Applications : | WB;ELISA |
| Target : | Axl |
| Fields : | >>EGFR tyrosine kinase inhibitor resistance |
| Gene Name : | AXL UFO |
| Protein Name : | Tyrosine-protein kinase receptor UFO |
| Human Gene Id : | 558 |
| Human Swiss Prot No : | P30530 |
| Mouse Gene Id : | 26362 |
| Mouse Swiss Prot No : | Q00993 |
| Immunogen : | Synthesized peptide derived from Axl . at AA range: 630-710 |
| Specificity : | Axl Polyclonal Antibody detects endogenous levels of Axl protein. |
| Formulation : | Liquid in PBS containing 50% glycerol, 0.5% BSA and 0.02% sodium azide. |
| Source : | Polyclonal, Rabbit,IgG |
| Dilution : | WB 1:500 - 1:2000. ELISA: 1:10000. Not yet tested in other applications. |
| Purification : | The antibody was affinity-purified from rabbit antiserum by affinity-chromatography using epitope-specific immunogen. |
| Concentration : | 1 mg/ml |

Storage Stability : -15°C to -25°C/1 year(Do not lower than -25°C)

Observed Band : 130kD

Background : The protein encoded by this gene is a member of the Tyro3-Axl-Mer (TAM) receptor tyrosine kinase subfamily. The encoded protein possesses an extracellular domain which is composed of two immunoglobulin-like motifs at the N-terminal, followed by two fibronectin type-III motifs. It transduces signals from the extracellular matrix into the cytoplasm by binding to the vitamin K-dependent protein growth arrest-specific 6 (Gas6). This gene may be involved in several cellular functions including growth, migration, aggregation and anti-inflammation in multiple cell types. Alternative splicing results in multiple transcript variants of this gene. [provided by RefSeq, Jul 2013],

Function : catalytic activity:ATP + a [protein]-L-tyrosine = ADP + a [protein]-L-tyrosine phosphate.,disease:Has transforming potential in patients with chronic myeloproliferative disorder or chronic myelocytic leukemia.,function:May function as a signal transducer between specific cell types of mesodermal origin. In case of filovirus infection, seems to function as a cell entry factor.,similarity:Belongs to the protein kinase superfamily. Tyr protein kinase family. AXL/UFO subfamily.,similarity:Contains 1 protein kinase domain.,similarity:Contains 2 fibronectin type-III domains.,similarity:Contains 2 Ig-like C2-type (immunoglobulin-like) domains.,subunit:Heterodimer and heterotetramer with GAS6.,tissue specificity:Highly expressed in metastatic colon tumors. Expressed in primary colon tumors. Weakly expressed in normal colon tissue.,

Subcellular Location : Cell membrane ; Single-pass type I membrane protein .

Expression : Highly expressed in metastatic colon tumors. Expressed in primary colon tumors. Weakly expressed in normal colon tissue.

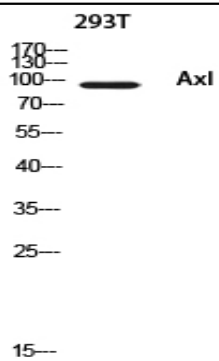
Sort : 2538

No4 : 1

Host : Rabbit

Modifications : Unmodified

Products Images



Western blot analysis of 293T using Axl antibody. Antibody was diluted at 1:500. Secondary antibody(catalog#:RS0002) was diluted at 1:20000