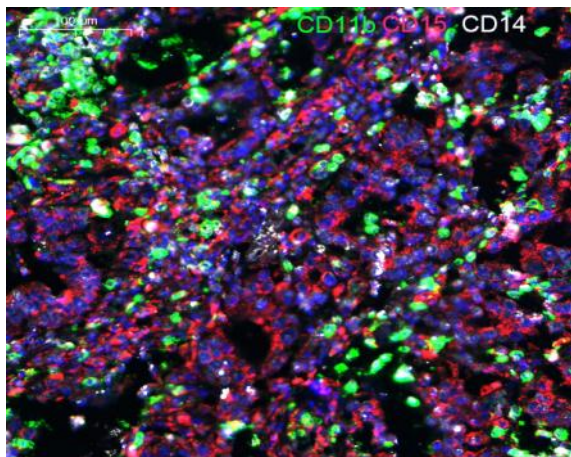


CD11b Polyclonal Antibody

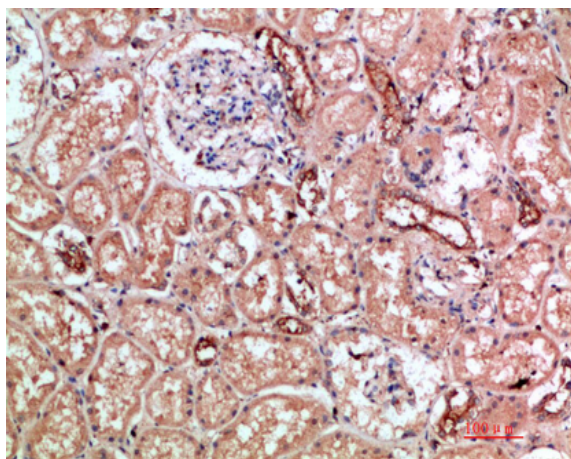
Catalog No :	YT5923
Reactivity :	Human;Rat;Mouse;
Applications :	IHC;IF;mult-IHC;ELISA
Target :	CD11b
Fields :	>>Rap1 signaling pathway;>>Phagosome;>>Cell adhesion molecules;>>Complement and coagulation cascades;>>Neutrophil extracellular trap formation;>>Hematopoietic cell lineage;>>Leukocyte transendothelial migration;>>Regulation of actin cytoskeleton;>>Pertussis;>>Legionellosis;>>Leishmaniasis;>>Amoebiasis;>>Staphylococcus aureus infection;>>Tuberculosis;>>Transcriptional misregulation in cancer;>>Acute myeloid leukemia
Gene Name :	ITGAM CD11B CR3A
Protein Name :	Integrin alpha-M (CD11 antigen-like family member B) (CR-3 alpha chain) (Cell surface glycoprotein MAC-1 subunit alpha) (Leukocyte adhesion receptor MO1) (Neutrophil adherence receptor) (CD antigen CD
Human Gene Id :	3684
Human Swiss Prot No :	P11215
Mouse Swiss Prot No :	P05555
Immunogen :	Synthetic peptide from human protein at AA range: 280-360
Specificity :	The antibody detects endogenous CD11b
Formulation :	Liquid in PBS containing 50% glycerol, 0.5% BSA and 0.02% sodium azide.
Source :	Polyclonal, Rabbit,IgG
Dilution :	IHC 1:50-200, ELISA 1:10000-20000. IF 1:50-200 The antibody was affinity-purified from rabbit antiserum by affinity-

Purification :	<u>chromatography using epitope-specific immunogen.</u>
Concentration :	<u>1 mg/ml</u>
Storage Stability :	<u>-15°C to -25°C/1 year(Do not lower than -25°C)</u>
Cell Pathway :	<u>Cell adhesion molecules (CAMs);Hematopoietic cell lineage;Leukocyte transendothelial migration;Regulates Actin and Cytoskeleton;</u>
Background :	<u>integrin subunit alpha M(ITGAM) Homo sapiens This gene encodes the integrin alpha M chain. Integrins are heterodimeric integral membrane proteins composed of an alpha chain and a beta chain. This I-domain containing alpha integrin combines with the beta 2 chain (ITGB2) to form a leukocyte-specific integrin referred to as macrophage receptor 1 ('Mac-1'), or inactivated-C3b (iC3b) receptor 3 ('CR3'). The alpha M beta 2 integrin is important in the adherence of neutrophils and monocytes to stimulated endothelium, and also in the phagocytosis of complement coated particles. Multiple transcript variants encoding different isoforms have been found for this gene. [provided by RefSeq, Mar 2009],</u>
Function :	<u>disease:Genetic variations in ITGAM has been associated with susceptibility to systemic lupus erythematosus type 6 (SLEB6) [MIM:609939]. Systemic lupus erythematosus (SLE) is a chronic, inflammatory and often febrile multisystemic disorder of connective tissue. It affects principally the skin, joints, kidneys and serosal membranes. It is thought to represent a failure of the regulatory mechanisms of the autoimmune system.,domain:The integrin I-domain (insert) is a VWFA domain. Integrins with I-domains do not undergo protease cleavage.,function:Integrin alpha-M/beta-2 is implicated in various adhesive interactions of monocytes, macrophages and granulocytes as well as in mediating the uptake of complement-coated particles. It is identical with CR-3, the receptor for the iC3b fragment of the third complement component. It probably recognizes the R-G-D peptide in C3b. Integrin alpha-M/beta-2</u>
Subcellular Location :	<u>Cell membrane ; Single-pass type I membrane protein . Membrane raft ; Single-pass type I membrane protein .</u>
Expression :	<u>Predominantly expressed in monocytes and granulocytes (PubMed:1346576). Expressed in neutrophils (at protein level) (PubMed:21193407).</u>
Tag :	<u>hot</u>
Sort :	<u>1</u>
No4 :	<u>1</u>
Host :	<u>Rabbit</u>

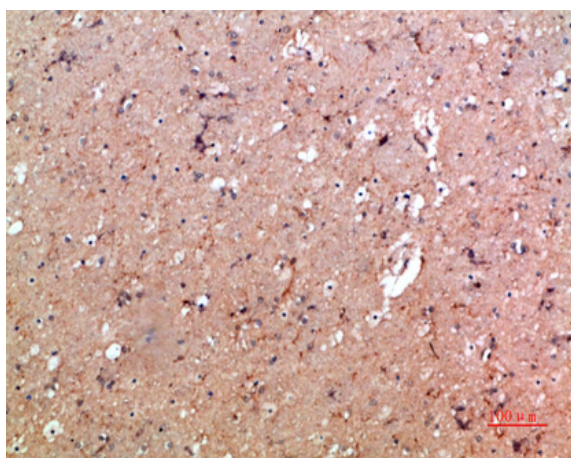
Products Images



Fluorescence multiplex immunohistochemical analysis of normal human gastric cancer tissue (formalin-fixed paraffin-embedded section). The section was incubated in 3 rounds of staining; in the order of CD15 YT0726 (1/50 dilution), CD11b YT5923 (1/50 dilution), CD14 YM6145 (1/50 dilution), each using a separate fluorescent tyramide signal amplification system. Sodium citrate antigen retrieval (Immunoway YS0002, 30 minutes) was used in between rounds of tyramide signal amplification to remove the antibody from the previous round, to avoid any cross-reactivity. DAPI (dark blue) was used as a nuclear counter stain.



Immunohistochemical analysis of paraffin-embedded human-kidney, antibody was diluted at 1:200



Immunohistochemical analysis of paraffin-embedded human-brain, antibody was diluted at 1:200