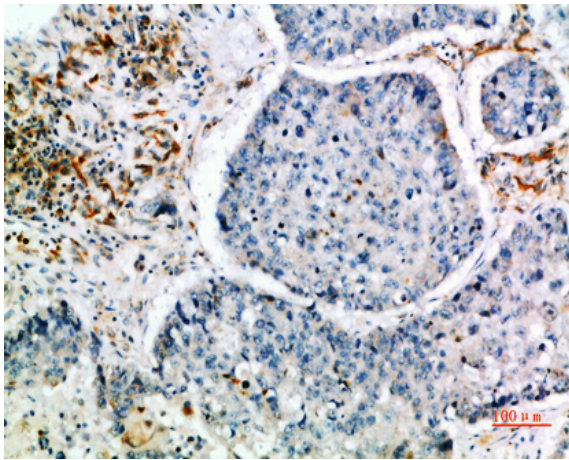


## CIS Polyclonal Antibody

<b>Catalog No :</b>	YT5920
<b>Reactivity :</b>	Human;Mouse;Rat
<b>Applications :</b>	IHC;IF;ELISA
<b>Target :</b>	CIS
<b>Fields :</b>	>>JAK-STAT signaling pathway;>>Prolactin signaling pathway
<b>Gene Name :</b>	CISH G18
<b>Protein Name :</b>	Cytokine-inducible SH2-containing protein (CIS) (CIS-1) (Protein G18) (Suppressor of cytokine signaling) (SOCS)
<b>Human Gene Id :</b>	1154
<b>Human Swiss Prot No :</b>	Q9NSE2
<b>Mouse Gene Id :</b>	12700
<b>Mouse Swiss Prot No :</b>	Q62225
<b>Rat Swiss Prot No :</b>	O70512
<b>Immunogen :</b>	Synthetic peptide from human protein at AA range: 30-90
<b>Specificity :</b>	The antibody detects endogenous CIS
<b>Formulation :</b>	Liquid in PBS containing 50% glycerol, 0.5% BSA and 0.02% sodium azide.
<b>Source :</b>	Polyclonal, Rabbit,IgG
<b>Dilution :</b>	IHC 1:50-200, ELISA 1:10000-20000. IF 1:50-200
<b>Purification :</b>	The antibody was affinity-purified from rabbit antiserum by affinity-chromatography using epitope-specific immunogen.

<b>Concentration :</b>	1 mg/ml
<b>Storage Stability :</b>	-15°C to -25°C/1 year(Do not lower than -25°C)
<b>Cell Pathway :</b>	Jak_STAT;
<b>Background :</b>	<p>cytokine inducible SH2 containing protein(CISH) Homo sapiens The protein encoded by this gene contains a SH2 domain and a SOCS box domain. The protein thus belongs to the cytokine-induced STAT inhibitor (CIS), also known as suppressor of cytokine signaling (SOCS) or STAT-induced STAT inhibitor (SSI), protein family. CIS family members are known to be cytokine-inducible negative regulators of cytokine signaling. The expression of this gene can be induced by IL2, IL3, GM-CSF and EPO in hematopoietic cells. Proteasome-mediated degradation of this protein has been shown to be involved in the inactivation of the erythropoietin receptor. Multiple transcript variants encoding different isoforms have been found for this gene. [provided by RefSeq, Aug 2008],</p>
<b>Function :</b>	<p>disease:CISH deletion may be involved in the pathogenesis of renal cell carcinomas and of lung cancer since lung and kidney tumors frequently exhibit 3p21.3 deletions.,function:SOCS family proteins form part of a classical negative feedback system that regulates cytokine signal transduction. CIS is involved in the negative regulation of cytokines that signal through the JAK-STAT5 pathway such as erythropoietin, prolactin and interleukin 3 (IL3) receptor. Inhibits STAT5 trans-activation by suppressing its tyrosine phosphorylation. May be a substrate-recognition component of a SCF-like ECS (Elongin BC-CUL2/5-SOCS-box protein) E3 ubiquitin-protein ligase complex which mediates the ubiquitination and subsequent proteasomal degradation of target proteins.,induction:By a subset of cytokines including erythropoietin (EPO).,pathway:Protein modification; protein ubiquitination.,PTM:Association wi</p>
<b>Subcellular Location :</b>	cytoplasm,cytosol,plasma membrane,
<b>Expression :</b>	Expressed in various epithelial tissues. Abundantly expressed in liver and kidney, and to a lesser extent in lung. The tissue distribution of isoforms 1 and 1B is distinct.
<b>Tag :</b>	hot
<b>Sort :</b>	4001
<b>No4 :</b>	1
<b>Host :</b>	Rabbit
<b>Modifications :</b>	Unmodified

## Products Images



Immunohistochemical analysis of paraffin-embedded human-lung-cancer, antibody was diluted at 1:200