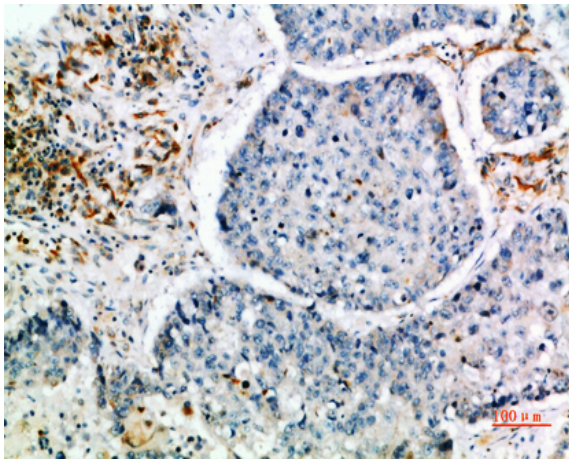


CIS Polyclonal Antibody

Catalog No :	YT5920
Reactivity :	Human;Mouse;Rat
Applications :	IHC;IF;ELISA
Target :	CIS
Fields :	>>JAK-STAT signaling pathway;>>Prolactin signaling pathway
Gene Name :	CISH G18
Protein Name :	Cytokine-inducible SH2-containing protein (CIS) (CIS-1) (Protein G18) (Suppressor of cytokine signaling) (SOCS)
Human Gene Id :	1154
Human Swiss Prot No :	Q9NSE2
Mouse Gene Id :	12700
Mouse Swiss Prot No :	Q62225
Rat Swiss Prot No :	O70512
Immunogen :	Synthetic peptide from human protein at AA range: 30-90
Specificity :	The antibody detects endogenous CIS
Formulation :	Liquid in PBS containing 50% glycerol, 0.5% BSA and 0.02% sodium azide.
Source :	Polyclonal, Rabbit,IgG
Dilution :	IHC 1:50-200, ELISA 1:10000-20000. IF 1:50-200
Purification :	The antibody was affinity-purified from rabbit antiserum by affinity-chromatography using epitope-specific immunogen.

Concentration :	1 mg/ml
Storage Stability :	-15°C to -25°C/1 year(Do not lower than -25°C)
Cell Pathway :	Jak_STAT;
Background :	<p>cytokine inducible SH2 containing protein(CISH) Homo sapiens The protein encoded by this gene contains a SH2 domain and a SOCS box domain. The protein thus belongs to the cytokine-induced STAT inhibitor (CIS), also known as suppressor of cytokine signaling (SOCS) or STAT-induced STAT inhibitor (SSI), protein family. CIS family members are known to be cytokine-inducible negative regulators of cytokine signaling. The expression of this gene can be induced by IL2, IL3, GM-CSF and EPO in hematopoietic cells. Proteasome-mediated degradation of this protein has been shown to be involved in the inactivation of the erythropoietin receptor. Multiple transcript variants encoding different isoforms have been found for this gene. [provided by RefSeq, Aug 2008],</p>
Function :	<p>disease:CISH deletion may be involved in the pathogenesis of renal cell carcinomas and of lung cancer since lung and kidney tumors frequently exhibit 3p21.3 deletions.,function:SOCS family proteins form part of a classical negative feedback system that regulates cytokine signal transduction. CIS is involved in the negative regulation of cytokines that signal through the JAK-STAT5 pathway such as erythropoietin, prolactin and interleukin 3 (IL3) receptor. Inhibits STAT5 trans-activation by suppressing its tyrosine phosphorylation. May be a substrate-recognition component of a SCF-like ECS (Elongin BC-CUL2/5-SOCS-box protein) E3 ubiquitin-protein ligase complex which mediates the ubiquitination and subsequent proteasomal degradation of target proteins.,induction:By a subset of cytokines including erythropoietin (EPO).,pathway:Protein modification; protein ubiquitination.,PTM:Association wi</p>
Subcellular Location :	cytoplasm,cytosol,plasma membrane,
Expression :	Expressed in various epithelial tissues. Abundantly expressed in liver and kidney, and to a lesser extent in lung. The tissue distribution of isoforms 1 and 1B is distinct.
Tag :	hot
Sort :	4001
No4 :	1
Host :	Rabbit
Modifications :	Unmodified

Products Images



Immunohistochemical analysis of paraffin-embedded human-lung-cancer, antibody was diluted at 1:200