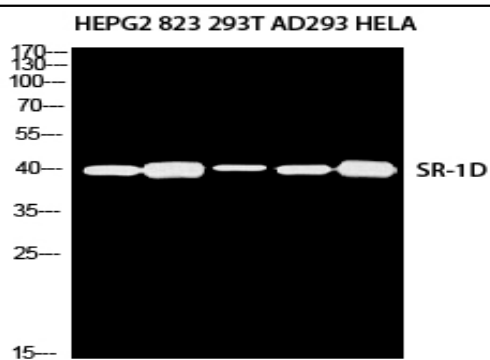


SR-1D Polyclonal Antibody

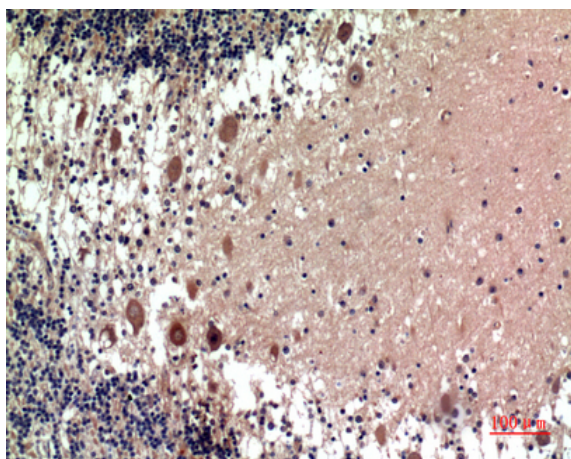
Catalog No :	YT5668
Reactivity :	Human;Mouse;Rat
Applications :	WB;IHC;IF;ELISA
Target :	SR-1D
Fields :	>>cAMP signaling pathway;>>Neuroactive ligand-receptor interaction;>>Serotonergic synapse;>>Taste transduction
Gene Name :	HTR1D
Protein Name :	5-hydroxytryptamine receptor 1D
Human Gene Id :	3352
Human Swiss Prot No :	P28221
Mouse Gene Id :	15552
Mouse Swiss Prot No :	Q61224
Rat Gene Id :	25323
Rat Swiss Prot No :	P28565
Immunogen :	Synthesized peptide derived from SR-1D . at AA range: 120-200
Specificity :	SR-1D Polyclonal Antibody detects endogenous levels of SR-1D protein.
Formulation :	Liquid in PBS containing 50% glycerol, 0.5% BSA and 0.02% sodium azide.
Source :	Polyclonal, Rabbit,IgG
Dilution :	WB 1:500 - 1:2000. IHC: 1:100-1:300. ELISA: 1:10000.. IF 1:50-200

Purification :	The antibody was affinity-purified from rabbit antiserum by affinity-chromatography using epitope-specific immunogen.
Concentration :	1 mg/ml
Storage Stability :	-15°C to -25°C/1 year(Do not lower than -25°C)
Observed Band :	41kD
Cell Pathway :	Neuroactive ligand-receptor interaction;
Background :	function:This is one of the several different receptors for 5-hydroxytryptamine (serotonin), a biogenic hormone that functions as a neurotransmitter, a hormone, and a mitogen. The activity of this receptor is mediated by G proteins that inhibit adenylate cyclase activity.,similarity:Belongs to the G-protein coupled receptor 1 family.,
Function :	function:This is one of the several different receptors for 5-hydroxytryptamine (serotonin), a biogenic hormone that functions as a neurotransmitter, a hormone, and a mitogen. The activity of this receptor is mediated by G proteins that inhibit adenylate cyclase activity.,similarity:Belongs to the G-protein coupled receptor 1 family.,
Subcellular Location :	Cell membrane ; Multi-pass membrane protein .
Expression :	Detected in brain neocortex and caudate nucleus (at protein level).
Tag :	hot
Sort :	16575
No4 :	1
Host :	Rabbit
Modifications :	Unmodified

Products Images



Western blot analysis of HEPG2 823 293T AD293 HELA using SR-1D antibody. Antibody was diluted at 1:500. Secondary antibody(catalog#:RS0002) was diluted at 1:20000



Immunohistochemical analysis of paraffin-embedded human-brain, antibody was diluted at 1:100