

**Mob3A/B Polyclonal Antibody**

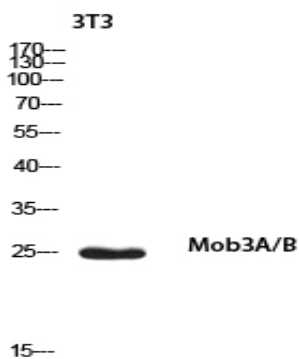
<b>Catalog No :</b>	YT5667
<b>Reactivity :</b>	Human;Mouse
<b>Applications :</b>	WB;IHC;IF;ELISA
<b>Target :</b>	Mob3A/B
<b>Gene Name :</b>	MMOBKL2A/MMOBKL2B
<b>Protein Name :</b>	Mps one binder kinase activator-like 2A/B
<b>Human Gene Id :</b>	126308
<b>Human Swiss Prot No :</b>	Q96BX8
<b>Mouse Gene Id :</b>	208228
<b>Mouse Swiss Prot No :</b>	Q8BSU7
<b>Immunogen :</b>	Synthesized peptide derived from Mob3A/B . at AA range: 1-80
<b>Specificity :</b>	Mob3A/B Polyclonal Antibody detects endogenous levels of Mob3A/B protein.
<b>Formulation :</b>	Liquid in PBS containing 50% glycerol, 0.5% BSA and 0.02% sodium azide.
<b>Source :</b>	Polyclonal, Rabbit,IgG
<b>Dilution :</b>	WB 1:500 - 1:2000. IHC: 1:100-1:300. ELISA: 1:10000.. IF 1:50-200
<b>Purification :</b>	The antibody was affinity-purified from rabbit antiserum by affinity-chromatography using epitope-specific immunogen.
<b>Concentration :</b>	1 mg/ml
<b>Storage Stability :</b>	-15°C to -25°C/1 year(Do not lower than -25°C)

---

<b>Observed Band :</b>	25kD
<b>Background :</b>	function:May regulate the activity of kinases.,sequence caution:Chimera. There is an inclusion of DNA from another gene in position 141.,similarity:Belongs to the MOB1/phocein family.,
<b>Function :</b>	function:May regulate the activity of kinases.,sequence caution:Chimera. There is an inclusion of DNA from another gene in position 141.,similarity:Belongs to the MOB1/phocein family.,
<b>Subcellular Location :</b>	intracellular,
<b>Expression :</b>	Cervix,Skin,
<b>Sort :</b>	9734
<b>No4 :</b>	1
<b>Host :</b>	Rabbit
<b>Modifications :</b>	Unmodified

---

## Products Images



Western blot analysis of 3T3 using Mob3A/B antibody.  
Secondary antibody(catalog#:RS0002) was diluted at 1:20000