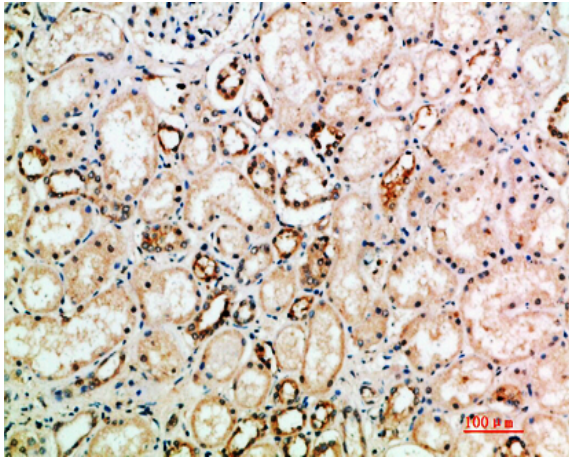


NT-3 Polyclonal Antibody

Catalog No :	YT5911
Reactivity :	Human;Mouse;Rat
Applications :	IHC;IF;ELISA
Target :	NT-3
Fields :	>>MAPK signaling pathway;>>Ras signaling pathway;>>PI3K-Akt signaling pathway;>>Neurotrophin signaling pathway
Gene Name :	NTF3
Protein Name :	Neurotrophin-3 (NT-3) (HDNF) (Nerve growth factor 2) (NGF-2) (Neurotrophic factor)
Human Gene Id :	4908
Human Swiss Prot No :	P20783
Mouse Gene Id :	18205
Mouse Swiss Prot No :	P20181
Rat Swiss Prot No :	P18280
Immunogen :	Synthetic peptide from human protein at AA range: 180-230
Specificity :	The antibody detects endogenous NT-3
Formulation :	Liquid in PBS containing 50% glycerol, 0.5% BSA and 0.02% sodium azide.
Source :	Polyclonal, Rabbit,IgG
Dilution :	IHC 1:50-200, ELISA 1:10000-20000. IF 1:50-200
Purification :	The antibody was affinity-purified from rabbit antiserum by affinity-chromatography using epitope-specific immunogen.

Concentration :	1 mg/ml
Storage Stability :	-15°C to -25°C/1 year(Do not lower than -25°C)
Cell Pathway :	MAPK_ERK_Growth;MAPK_G_Protein;Neurotrophin;
Background :	<p>The protein encoded by this gene is a member of the neurotrophin family, that controls survival and differentiation of mammalian neurons. This protein is closely related to both nerve growth factor and brain-derived neurotrophic factor. It may be involved in the maintenance of the adult nervous system, and may affect development of neurons in the embryo when it is expressed in human placenta. NTF3-deficient mice generated by gene targeting display severe movement defects of the limbs. The mature peptide of this protein is identical in all mammals examined including human, pig, rat and mouse. [provided by RefSeq, Jul 2008],</p>
Function :	<p>function:Seems to promotes the survival of visceral and proprioceptive sensory neurons.,polymorphism:Variant Glu-76 (frequently reported as Glu-63) was thought to be associated with severe forms of schizophrenia. This does not seem to be the case.,similarity:Belongs to the NGF-beta family.,tissue specificity:Brain and peripheral tissues.,</p>
Subcellular Location :	Secreted.
Expression :	Brain and peripheral tissues.
Tag :	orthogonal
Sort :	1113
No4 :	1
Host :	Rabbit
Modifications :	Unmodified

Products Images



Immunohistochemical analysis of paraffin-embedded human-kidney, antibody was diluted at 1:200