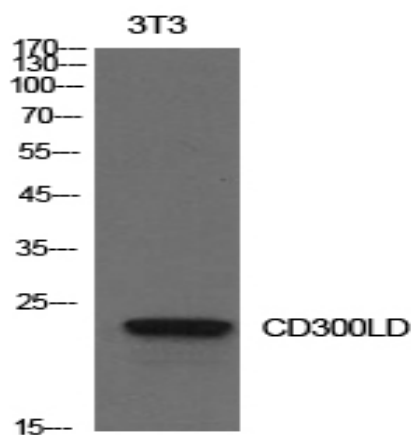


CD300d Polyclonal Antibody

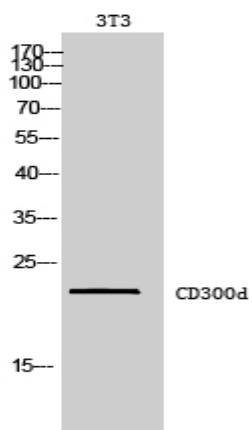
Catalog No :	YT5636
Reactivity :	Human;Mouse
Applications :	WB;ELISA
Target :	CD300d
Gene Name :	CD300LD
Protein Name :	CMRF35-like molecule 4
Human Gene Id :	100131439
Human Swiss Prot No :	Q6UXZ3
Mouse Gene Id :	217305
Immunogen :	The antiserum was produced against synthesized peptide derived from the Internal region of human CD300LD. AA range:61-110
Specificity :	CD300d Polyclonal Antibody detects endogenous levels of CD300d protein.
Formulation :	Liquid in PBS containing 50% glycerol, 0.5% BSA and 0.02% sodium azide.
Source :	Polyclonal, Rabbit,IgG
Dilution :	WB 1:500 - 1:2000. ELISA: 1:10000. Not yet tested in other applications.
Purification :	The antibody was affinity-purified from rabbit antiserum by affinity-chromatography using epitope-specific immunogen.
Concentration :	1 mg/ml
Storage Stability :	-15°C to -25°C/1 year(Do not lower than -25°C)
Observed Band :	22kD

Background :	similarity:Belongs to the CD300 family.,similarity:Contains 1 Ig-like V-type (immunoglobulin-like) domain.,
Function :	similarity:Belongs to the CD300 family.,similarity:Contains 1 Ig-like V-type (immunoglobulin-like) domain.,
Subcellular Location :	Cell membrane ; Single-pass type I membrane protein . Cell surface localization requires the ITAM-bearing Fc receptor FCER1G to overcome ER retention.
Expression :	Expression seems restricted to cells of myeloid lineage.
Sort :	3518
No4 :	1
Host :	Rabbit
Modifications :	Unmodified

Products Images



Western Blot analysis of NIH-3T3 cells using CD300d Polyclonal Antibody. Secondary antibody(catalog#:RS0002) was diluted at 1:20000



Western Blot analysis of 3T3 cells using CD300d Polyclonal Antibody. Secondary antibody(catalog#:RS0002) was diluted at 1:20000