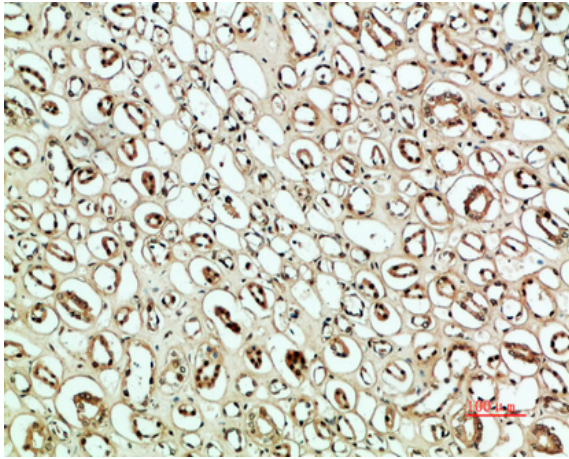


PLK2 Polyclonal Antibody

Catalog No :	YT5854
Reactivity :	Human;Rat
Applications :	IHC;IF;ELISA
Target :	PLK2
Fields :	>>FoxO signaling pathway
Gene Name :	PLK2 SNK
Protein Name :	PLK2
Human Gene Id :	10769
Human Swiss Prot No :	Q9NYY3
Mouse Gene Id :	20620
Mouse Swiss Prot No :	P53351
Rat Swiss Prot No :	Q9R012
Immunogen :	Synthetic peptide from human protein at AA range: 377-451
Specificity :	The antibody detects endogenous PLK2
Formulation :	Liquid in PBS containing 50% glycerol, 0.5% BSA and 0.02% sodium azide.
Source :	Polyclonal, Rabbit,IgG
Dilution :	IHC 1:50-200, ELISA 1:10000-20000. IF 1:50-200
Purification :	The antibody was affinity-purified from rabbit antiserum by affinity-chromatography using epitope-specific immunogen.

Concentration :	1 mg/ml
Storage Stability :	-15°C to -25°C/1 year(Do not lower than -25°C)
Background :	The protein encoded by this gene is a member of the polo family of serine/threonine protein kinases that have a role in normal cell division. This gene is most abundantly expressed in testis, spleen and fetal tissues, and its expression is inducible by serum, suggesting that it may also play an important role in cells undergoing rapid cell division. Alternatively spliced transcript variants encoding different isoforms have been found for this gene. [provided by RefSeq, Nov 2011],
Function :	catalytic activity:ATP + a protein = ADP + a phosphoprotein.,function:May play a role in the division of at least some cell types, such as fibroblasts, and could function in embryogenesis, wound healing or neoplasia.,similarity:Belongs to the protein kinase superfamily.,similarity:Belongs to the protein kinase superfamily. Ser/Thr protein kinase family. CDC5/Polo subfamily.,similarity:Contains 1 protein kinase domain.,similarity:Contains 2 POLO box domains.,
Subcellular Location :	Cytoplasm, cytoskeleton, microtubule organizing center, centrosome, centriole . Cell projection, dendrite . Localizes to centrosomes during early G1 phase where it only associates to the mother centriole and then distributes equally to both mother and daughter centrioles at the onset of S phase.
Expression :	Expressed at higher level in the fetal lung, kidney, spleen and heart.
Sort :	12844
No4 :	1
Host :	Rabbit
Modifications :	Unmodified

Products Images



Immunohistochemical analysis of paraffin-embedded human-kidney, antibody was diluted at 1:200