

## DCT Polyclonal Antibody

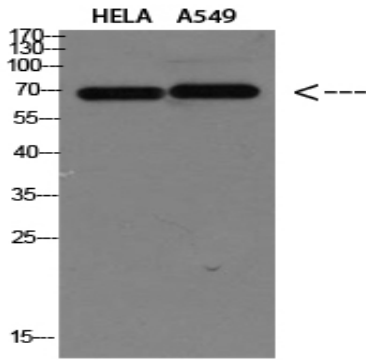
<b>Catalog No :</b>	YT5849
<b>Reactivity :</b>	Human;Rat;Mouse
<b>Applications :</b>	WB;IHC;IF;ELISA
<b>Target :</b>	DCT
<b>Fields :</b>	>>Tyrosine metabolism;>>Metabolic pathways;>>Melanogenesis
<b>Gene Name :</b>	DCT TYRP2
<b>Protein Name :</b>	DCT
<b>Human Gene Id :</b>	1638
<b>Human Swiss Prot No :</b>	P40126
<b>Mouse Gene Id :</b>	13190
<b>Mouse Swiss Prot No :</b>	P29812
<b>Immunogen :</b>	Synthetic peptide from human protein at AA range: 232-304
<b>Specificity :</b>	The antibody detects endogenous DCT
<b>Formulation :</b>	Liquid in PBS containing 50% glycerol, 0.5% BSA and 0.02% sodium azide.
<b>Source :</b>	Polyclonal, Rabbit,IgG
<b>Dilution :</b>	WB 1:500-2000,IHC 1:500-200, ELISA 1:10000-20000. IF 1:50-200
<b>Purification :</b>	The antibody was affinity-purified from rabbit antiserum by affinity-chromatography using epitope-specific immunogen.
<b>Concentration :</b>	1 mg/ml

---

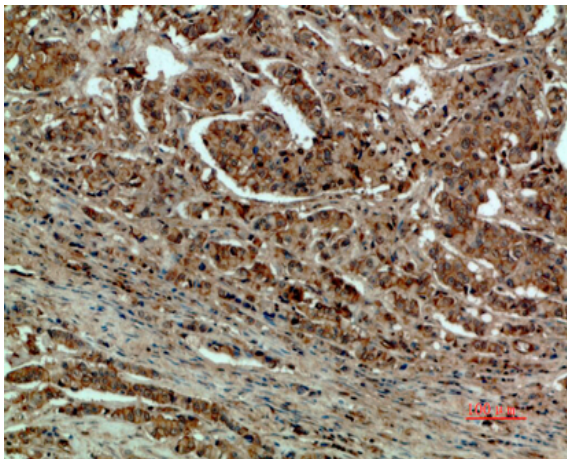
<b>Storage Stability :</b>	-15°C to -25°C/1 year(Do not lower than -25°C)
<b>Observed Band :</b>	59kD
<b>Cell Pathway :</b>	Tyrosine metabolism;Melanogenesis;
<b>Background :</b>	catalytic activity:L-dopachrome = 5,6-dihydroxyindole-2-carboxylate.,cofactor:Binds 2 zinc ions per subunit.,function:Involved in regulating eumelanin and phaeomelanin levels.,pathway:Pigment biosynthesis; melanin biosynthesis.,similarity:Belongs to the tyrosinase family.,subunit:Tyrosinase, TYRP1 and TYRP2 may form a multienzyme complex.,
<b>Function :</b>	catalytic activity:L-dopachrome = 5,6-dihydroxyindole-2-carboxylate.,cofactor:Binds 2 zinc ions per subunit.,function:Involved in regulating eumelanin and phaeomelanin levels.,pathway:Pigment biosynthesis; melanin biosynthesis.,similarity:Belongs to the tyrosinase family.,subunit:Tyrosinase, TYRP1 and TYRP2 may form a multienzyme complex.,
<b>Subcellular Location :</b>	Melanosome membrane ; Single-pass type I membrane protein . Melanosome . Proper trafficking to melanosome is regulated by SGSM2, ANKRD27, RAB9A, RAB32 and RAB38. .
<b>Expression :</b>	Liver,Lymphnode melanoma metastases,Mammary gland,Melanoma,
<b>Sort :</b>	5040
<b>No4 :</b>	1
<b>Host :</b>	Rabbit
<b>Modifications :</b>	Unmodified

---

## Products Images



Western blot analysis of HELA A549 Cell Lysate, antibody was diluted at 1:1000. Secondary antibody(catalog#:RS0002) was diluted at 1:20000



Immunohistochemical analysis of paraffin-embedded human-breast-cancer, antibody was diluted at 1:200