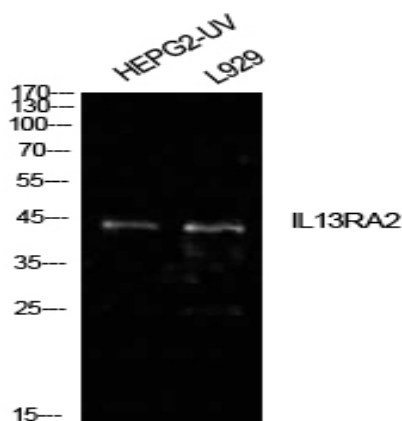


IL-13R α 2 Polyclonal Antibody

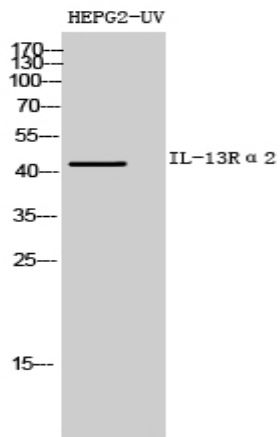
Catalog No :	YT5616
Reactivity :	Human;Rat;Mouse;
Applications :	WB;IHC;IF;ELISA
Target :	IL-13R α 2
Fields :	>>Cytokine-cytokine receptor interaction;>>JAK-STAT signaling pathway
Gene Name :	IL13RA2
Protein Name :	Interleukin-13 receptor subunit alpha-2
Human Gene Id :	3598
Human Swiss Prot No :	Q14627
Mouse Swiss Prot No :	O88786
Immunogen :	Synthesized peptide derived from Interleukin-13 receptor subunit alpha-2 at AA range: 241-290
Specificity :	IL-13R α 2 Polyclonal Antibody detects endogenous levels of IL-13R α 2 protein.
Formulation :	Liquid in PBS containing 50% glycerol, 0.5% BSA and 0.02% sodium azide.
Source :	Polyclonal, Rabbit,IgG
Dilution :	WB 1:500 - 1:2000. IHC: 1:100-1:300. ELISA: 1:10000.. IF 1:50-200
Purification :	The antibody was affinity-purified from rabbit antiserum by affinity-chromatography using epitope-specific immunogen.
Concentration :	1 mg/ml
Storage Stability :	-15°C to -25°C/1 year(Do not lower than -25°C)

Observed Band :	44kD
Cell Pathway :	Jak_STAT;
Background :	The protein encoded by this gene is closely related to IL13RA1, a subunit of the interleukin 13 receptor complex. This protein binds IL13 with high affinity, but lacks cytoplasmic domain, and does not appear to function as a signal mediator. It is reported to play a role in the internalization of IL13. [provided by RefSeq, Jul 2008],
Function :	domain:The box 1 motif is required for JAK interaction and/or activation.,domain:The WSXWS motif appears to be necessary for proper protein folding and thereby efficient intracellular transport and cell-surface receptor binding.,function:Binds as a monomer with high affinity to interleukin 13 (IL13), but not to IL4.,similarity:Belongs to the type I cytokine receptor family. Type 5 subfamily.,similarity:Contains 1 fibronectin type-III domain.,
Subcellular Location :	Membrane; Single-pass type I membrane protein.
Expression :	Brain,Lung,Prostate,Renal cell carcinoma,Testis,
Sort :	8436
No4 :	1
Host :	Rabbit
Modifications :	Unmodified

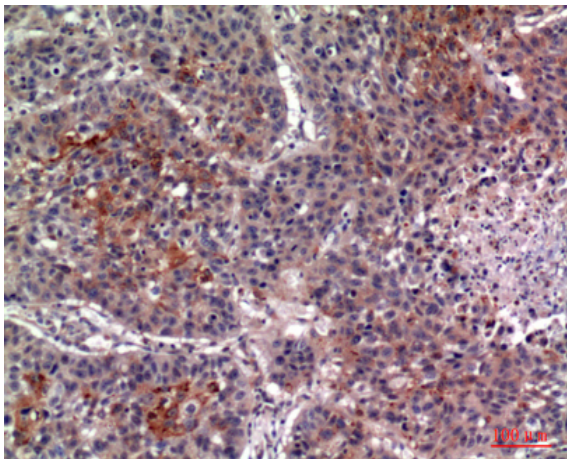
Products Images



Western Blot analysis of HepG2(UV), L929 cells using IL-13Ra2 Polyclonal Antibody. Antibody was diluted at 1:500. Secondary antibody(catalog#:RS0002) was diluted at 1:20000



Western Blot analysis of HEPG2-UV cells using IL-13R α 2 Polyclonal Antibody diluted at 1:500. Secondary antibody (catalog#:RS0002) was diluted at 1:20000



Immunohistochemical analysis of paraffin-embedded human-lung, antibody was diluted at 1:100