

## CD244 Polyclonal Antibody

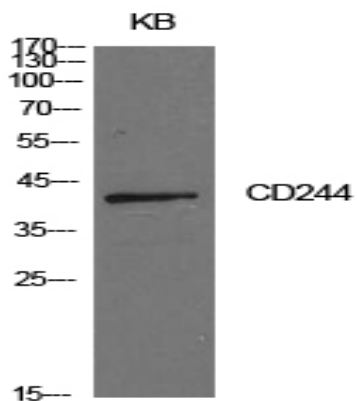
<b>Catalog No :</b>	YT5615
<b>Reactivity :</b>	Human;Rat;Mouse;
<b>Applications :</b>	WB;IHC;IF;ELISA
<b>Target :</b>	CD244
<b>Fields :</b>	>>Natural killer cell mediated cytotoxicity
<b>Gene Name :</b>	CD244
<b>Protein Name :</b>	Natural killer cell receptor 2B4
<b>Human Gene Id :</b>	51744
<b>Human Swiss Prot No :</b>	Q9BZW8
<b>Mouse Swiss Prot No :</b>	Q07763
<b>Immunogen :</b>	The antiserum was produced against synthesized peptide derived from the Internal region of human CD244. AA range:101-150
<b>Specificity :</b>	CD244 Polyclonal Antibody detects endogenous levels of CD244 protein.
<b>Formulation :</b>	Liquid in PBS containing 50% glycerol, 0.5% BSA and 0.02% sodium azide.
<b>Source :</b>	Polyclonal, Rabbit,IgG
<b>Dilution :</b>	WB 1:500 - 1:2000. IHC: 1:100-1:300. ELISA: 1:10000.. IF 1:50-200
<b>Purification :</b>	The antibody was affinity-purified from rabbit antiserum by affinity-chromatography using epitope-specific immunogen.
<b>Concentration :</b>	1 mg/ml
<b>Storage Stability :</b>	-15°C to -25°C/1 year(Do not lower than -25°C)

---

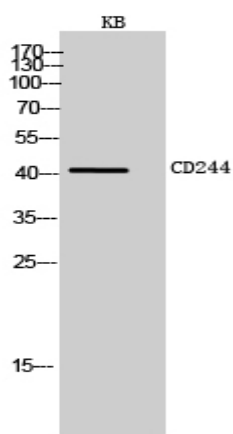
<b>Observed Band :</b>	42kD
<b>Cell Pathway :</b>	Natural killer cell mediated cytotoxicity;
<b>Background :</b>	This gene encodes a cell surface receptor expressed on natural killer (NK) cells (and some T cells) that mediate non-major histocompatibility complex (MHC) restricted killing. The interaction between NK-cell and target cells via this receptor is thought to modulate NK-cell cytolytic activity. Alternatively spliced transcript variants encoding different isoforms have been found for this gene.[provided by RefSeq, Oct 2009],
<b>Function :</b>	function:Modulate other receptor-ligand interactions to enhance leukocyte activation.,PTM:Phosphorylated.,similarity:Contains 2 Ig-like (immunoglobulin-like) domains.,subunit:Interacts with CD48. Following phosphorylation, it is able to recruit PTPN11/SHP-2 and SH2D1A/SAP. Binding of SH2D1A/SAP to CD244 prevents its association with PTPN11/SHP-2.,tissue specificity:Expressed in spleen, PBL, followed by lung, liver, testis and small intestine. Expressed not only in NK cells, but also on monocytes and basophils.,
<b>Subcellular Location :</b>	Membrane ; Single-pass type I membrane protein . Cell membrane . Receptor engagement results in a recruitment to lipid drafts essential for the subsequent tyrosine phosphorylation of the ITSMs. .
<b>Expression :</b>	Expressed in spleen, PBL, followed by lung, liver, testis and small intestine. Expressed in all natural killer (NK) cells, monocytes and basophils, TCR-gamma/delta+ T-cells, monocytes, basophils, and on a subset of CD8(+) T-cells.
<b>Tag :</b>	hot
<b>Sort :</b>	3493
<b>No4 :</b>	1
<b>Host :</b>	Rabbit
<b>Modifications :</b>	Unmodified

---

## Products Images



Western Blot analysis of KB cells using CD244 Polyclonal Antibody. Secondary antibody(catalog#:RS0002) was diluted at 1:20000



Western Blot analysis of KB cells using CD244 Polyclonal Antibody. Secondary antibody(catalog#:RS0002) was diluted at 1:20000