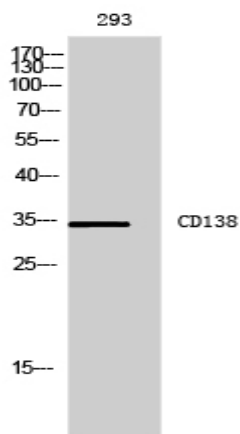


CD138 Polyclonal Antibody

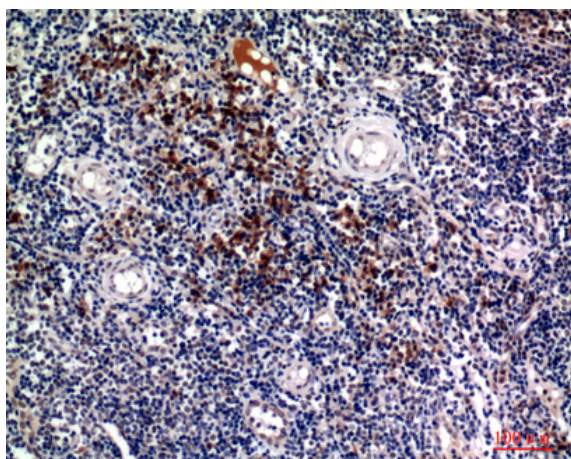
| | |
|------------------------------|---|
| Catalog No : | YT5610 |
| Reactivity : | Human;Rat;Mouse; |
| Applications : | WB;IHC;IF;ELISA |
| Target : | CD138 |
| Fields : | >>ECM-receptor interaction;>>Cell adhesion molecules;>>Malaria;>>Proteoglycans in cancer;>>Fluid shear stress and atherosclerosis |
| Gene Name : | SDC1 |
| Protein Name : | Syndecan-1 |
| Human Gene Id : | 6382 |
| Human Swiss Prot No : | P18827 |
| Mouse Swiss Prot No : | P18828 |
| Immunogen : | The antiserum was produced against synthesized peptide derived from the Internal region of human SDC1. AA range:191-240 |
| Specificity : | CD138 Polyclonal Antibody detects endogenous levels of CD138 protein. |
| Formulation : | Liquid in PBS containing 50% glycerol, 0.5% BSA and 0.02% sodium azide. |
| Source : | Polyclonal, Rabbit,IgG |
| Dilution : | WB 1:500 - 1:2000. IHC: 1:100-1:300. ELISA: 1:10000.. IF 1:50-200 |
| Purification : | The antibody was affinity-purified from rabbit antiserum by affinity-chromatography using epitope-specific immunogen. |
| Concentration : | 1 mg/ml |

| | |
|-------------------------------|---|
| Storage Stability : | <u>-15°C to -25°C/1 year(Do not lower than -25°C)</u> |
| Observed Band : | <u>34kD</u> |
| Cell Pathway : | <u>ECM-receptor interaction;Cell adhesion molecules (CAMs);</u> |
| Background : | <p>The protein encoded by this gene is a transmembrane (type I) heparan sulfate proteoglycan and is a member of the syndecan proteoglycan family. The syndecans mediate cell binding, cell signaling, and cytoskeletal organization and syndecan receptors are required for internalization of the HIV-1 tat protein. The syndecan-1 protein functions as an integral membrane protein and participates in cell proliferation, cell migration and cell-matrix interactions via its receptor for extracellular matrix proteins. Altered syndecan-1 expression has been detected in several different tumor types. While several transcript variants may exist for this gene, the full-length natures of only two have been described to date. These two represent the major variants of this gene and encode the same protein. [provided by RefSeq, Jul 2008],</p> |
| Function : | <p>function:Cell surface proteoglycan that bears both heparan sulfate and chondroitin sulfate and that links the cytoskeleton to the interstitial matrix.,similarity:Belongs to the syndecan proteoglycan family.,subunit:Interacts with CDCP1.,</p> |
| Subcellular Location : | <p>Membrane ; Single-pass type I membrane protein . Secreted . Secreted, extracellular exosome . Shedding of the ectodomain produces a soluble form. .</p> |
| Expression : | <u>Dermoid cancer,Fibroblast,Kidney,Mammary gland,Placenta,</u> |
| Tag : | <u>hot</u> |
| Sort : | <u>1</u> |
| No4 : | <u>1</u> |
| Host : | <u>Rabbit</u> |
| Modifications : | <u>Unmodified</u> |

Products Images



Western Blot analysis of 293 cells using CD138 Polyclonal Antibody. Secondary antibody(catalog#:RS0002) was diluted at 1:20000



Immunohistochemical analysis of paraffin-embedded human-tonsils, antibody was diluted at 1:100