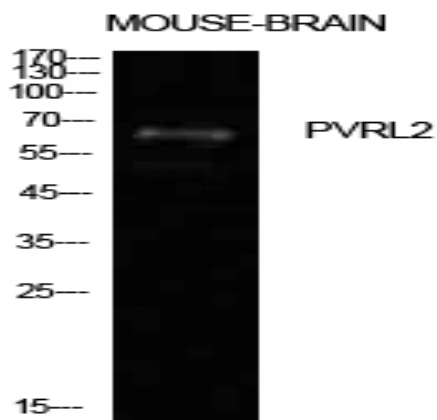


## Nectin 2 Polyclonal Antibody

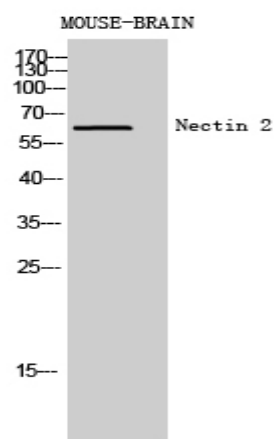
<b>Catalog No :</b>	YT5603
<b>Reactivity :</b>	Human;Mouse
<b>Applications :</b>	WB;ELISA
<b>Target :</b>	Nectin 2
<b>Fields :</b>	>>Cell adhesion molecules;>>Adherens junction;>>Herpes simplex virus 1 infection
<b>Gene Name :</b>	PVRL2
<b>Protein Name :</b>	Poliovirus receptor-related protein 2
<b>Human Gene Id :</b>	5819
<b>Human Swiss Prot No :</b>	Q92692
<b>Mouse Swiss Prot No :</b>	P32507
<b>Immunogen :</b>	Synthesized peptide derived from Poliovirus receptor-related protein 2 at AA range: 151-200
<b>Specificity :</b>	Nectin 2 Polyclonal Antibody detects endogenous levels of Nectin 2 protein.
<b>Formulation :</b>	Liquid in PBS containing 50% glycerol, 0.5% BSA and 0.02% sodium azide.
<b>Source :</b>	Polyclonal, Rabbit,IgG
<b>Dilution :</b>	WB 1:500 - 1:2000. ELISA: 1:10000. Not yet tested in other applications.
<b>Purification :</b>	The antibody was affinity-purified from rabbit antiserum by affinity-chromatography using epitope-specific immunogen.
<b>Concentration :</b>	1 mg/ml
<b>Storage Stability :</b>	-15°C to -25°C/1 year(Do not lower than -25°C)

<b>Observed Band :</b>	65kD
<b>Cell Pathway :</b>	Cell adhesion molecules (CAMs);Adherens_Junction;
<b>Background :</b>	<p>This gene encodes a single-pass type I membrane glycoprotein with two Ig-like C2-type domains and an Ig-like V-type domain. This protein is one of the plasma membrane components of adherens junctions. It also serves as an entry for certain mutant strains of herpes simplex virus and pseudorabies virus, and it is involved in cell to cell spreading of these viruses. Variations in this gene have been associated with differences in the severity of multiple sclerosis. Alternate transcriptional splice variants, encoding different isoforms, have been characterized. [provided by RefSeq, Jul 2008],</p>
<b>Function :</b>	<p>function:Probable cell adhesion protein.,similarity:Belongs to the nectin family.,similarity:Contains 1 Ig-like V-type (immunoglobulin-like) domain.,similarity:Contains 2 Ig-like C2-type (immunoglobulin-like) domains.,subunit:Can form trans-heterodimers with PVRL3/nectin-3 (By similarity). Interacts with CD226. Receptor for alphaherpesvirus (HSV-1, HSV-2 and pseudorabies virus) entry into cells. Binds with low affinity to TIGIT.,tissue specificity:Ubiquitous.,</p>
<b>Subcellular Location :</b>	Cell membrane; Single-pass type I membrane protein.
<b>Expression :</b>	Ubiquitous.
<b>Sort :</b>	10652
<b>No4 :</b>	1
<b>Host :</b>	Rabbit
<b>Modifications :</b>	Unmodified

## Products Images



Western Blot analysis of mouse brain cells using Nectin 2 Polyclonal Antibody. Antibody was diluted at 1:500. Secondary antibody(catalog#:RS0002) was diluted at 1:20000



Western Blot analysis of MOUSE-BRAIN cells using Nectin 2 Polyclonal Antibody diluted at 1:500. Secondary antibody(catalog#:RS0002) was diluted at 1:20000