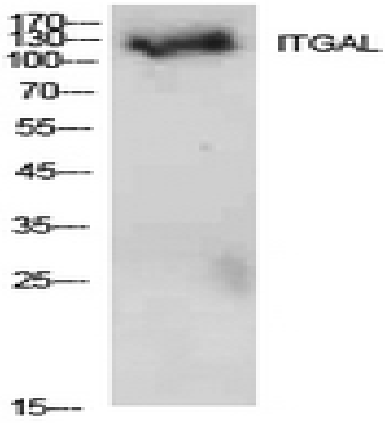


Integrin α L Polyclonal Antibody

Catalog No :	YT5578
Reactivity :	Human;Mouse
Applications :	WB;ELISA
Target :	Integrin α L
Fields :	>>Rap1 signaling pathway;>>Cell adhesion molecules;>>Neutrophil extracellular trap formation;>>Natural killer cell mediated cytotoxicity;>>Leukocyte transendothelial migration;>>Regulation of actin cytoskeleton;>>Malaria;>>Staphylococcus aureus infection;>>Human T-cell leukemia virus 1 infection;>>Epstein-Barr virus infection;>>Rheumatoid arthritis;>>Viral myocarditis
Gene Name :	ITGAL
Protein Name :	Integrin alpha-L
Human Gene Id :	3683
Human Swiss Prot No :	P20701
Mouse Swiss Prot No :	P24063
Immunogen :	The antiserum was produced against synthesized peptide derived from the Internal region of human ITGAL. AA range:171-220
Specificity :	Integrin α L Polyclonal Antibody detects endogenous levels of Integrin α L protein.
Formulation :	Liquid in PBS containing 50% glycerol, 0.5% BSA and 0.02% sodium azide.
Source :	Polyclonal, Rabbit,IgG
Dilution :	WB 1:500 - 1:2000. ELISA: 1:10000. Not yet tested in other applications.
Purification :	The antibody was affinity-purified from rabbit antiserum by affinity-chromatography using epitope-specific immunogen.

Concentration :	1 mg/ml
Storage Stability :	-15°C to -25°C/1 year(Do not lower than -25°C)
Observed Band :	130kD
Cell Pathway :	Cell adhesion molecules (CAMs);Natural killer cell mediated cytotoxicity;Leukocyte transendothelial migration;Regulates Actin and Cytoskeleton;Viral myocarditis;
Background :	integrin subunit alpha L(ITGAL) Homo sapiens ITGAL encodes the integrin alpha L chain. Integrins are heterodimeric integral membrane proteins composed of an alpha chain and a beta chain. This I-domain containing alpha integrin combines with the beta 2 chain (ITGB2) to form the integrin lymphocyte function-associated antigen-1 (LFA-1), which is expressed on all leukocytes. LFA-1 plays a central role in leukocyte intercellular adhesion through interactions with its ligands, ICAMs 1-3 (intercellular adhesion molecules 1 through 3), and also functions in lymphocyte costimulatory signaling. Two transcript variants encoding different isoforms have been found for this gene. [provided by RefSeq, Jul 2008],
Function :	domain:The integrin I-domain (insert) is a VWFA domain. Integrins with I-domains do not undergo protease cleavage.,function:Integrin alpha-L/beta-2 is a receptor for ICAM1, ICAM2, ICAM3 and ICAM4. It is involved in a variety of immune phenomena including leukocyte-endothelial cell interaction, cytotoxic T-cell mediated killing, and antibody dependent killing by granulocytes and monocytes.,similarity:Belongs to the integrin alpha chain family.,similarity:Contains 1 VWFA domain.,similarity:Contains 7 FG-GAP repeats.,subunit:Heterodimer of an alpha and a beta subunit. Alpha-L associates with beta-2.,tissue specificity:Leukocytes.,
Subcellular Location :	Cell membrane ; Single-pass type I membrane protein .
Expression :	Leukocytes.
Sort :	8610
No4 :	1
Host :	Rabbit
Modifications :	Unmodified

Products Images



Western Blot analysis of 293 cells using Integrin αL Polyclonal Antibody. Secondary antibody(catalog#:RS0002) was diluted at 1:20000