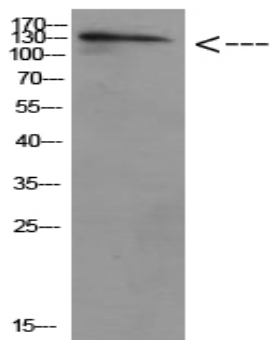


ULK2 Polyclonal Antibody

| | |
|------------------------------|---|
| Catalog No : | YT5809 |
| Reactivity : | Human;Mouse;Rat |
| Applications : | WB;ELISA |
| Target : | ULK2 |
| Fields : | >>Autophagy - other;>>Autophagy - animal;>>mTOR signaling pathway;>>Alzheimer disease;>>Amyotrophic lateral sclerosis;>>Huntington disease;>>Spinocerebellar ataxia;>>Pathways of neurodegeneration - multiple diseases |
| Gene Name : | ULK2 KIAA0623 |
| Protein Name : | unc-51-like kinase 2 (C. elegans) |
| Human Gene Id : | 9706 |
| Human Swiss Prot No : | Q8IYT8 |
| Mouse Gene Id : | 29869 |
| Mouse Swiss Prot No : | Q9QY01 |
| Immunogen : | Synthetic peptide from human protein at AA range: 930-1000 |
| Specificity : | The antibody detects endogenous ULK2 protein |
| Formulation : | Liquid in PBS containing 50% glycerol, 0.5% BSA and 0.02% sodium azide. |
| Source : | Polyclonal, Rabbit,IgG |
| Dilution : | WB 1:500-2000, ELISA 1:10000-20000 |
| Purification : | The antibody was affinity-purified from rabbit antiserum by affinity-chromatography using epitope-specific immunogen. |

| | |
|-------------------------------|---|
| Concentration : | 1 mg/ml |
| Storage Stability : | -15°C to -25°C/1 year(Do not lower than -25°C) |
| Observed Band : | 140kD |
| Cell Pathway : | Regulation of autophagy;mTOR; |
| Background : | unc-51 like autophagy activating kinase 2(ULK2) Homo sapiens This gene encodes a protein that is similar to a serine/threonine kinase in C. elegans which is involved in axonal elongation. The structure of this protein is similar to the C. elegans protein in that both proteins have an N-terminal kinase domain, a central proline/serine rich (PS) domain, and a C-terminal (C) domain. The gene is located within the Smith-Magenis syndrome region on chromosome 17. Alternatively spliced transcript variants encoding the same protein have been identified. [provided by RefSeq, Dec 2008], |
| Function : | catalytic activity:ATP + a protein = ADP + a phosphoprotein.,PTM:Autophosphorylated.,similarity:Belongs to the protein kinase superfamily. Ser/Thr protein kinase family. APG1/unc-51/ULK1 subfamily.,similarity:Contains 1 protein kinase domain., |
| Subcellular Location : | Cytoplasmic vesicle membrane ; Peripheral membrane protein . Localizes to pre-autophagosomal membrane. |
| Expression : | Brain,Testis, |
| Sort : | 23956 |
| No4 : | 1 |
| Host : | Rabbit |
| Modifications : | Unmodified |

Products Images



Western Blot analysis of HELA cells using Antibody diluted at 500. Secondary antibody(catalog#:RS0002) was diluted at 1:20000