

Beclin-1 Polyclonal Antibody

Catalog No :	YT5763
Reactivity :	Human;Mouse;Chicken
Applications :	WB;ELISA
Target :	Beclin 1
Fields :	>>Autophagy - other;>>Mitophagy - animal;>>Autophagy - animal;>>Apoptosis - multiple species;>>Apelin signaling pathway;>>Alzheimer disease;>>Amyotrophic lateral sclerosis;>>Huntington disease;>>Spinocerebellar ataxia;>>Pathways of neurodegeneration - multiple diseases;>>Shigellosis;>>Kaposi sarcoma-associated herpesvirus infection
Gene Name :	BECN1 GT197
Protein Name :	Beclin-1
Human Gene Id :	8678
Human Swiss Prot No :	Q14457
Mouse Gene Id :	56208
Mouse Swiss Prot No :	O88597
Immunogen :	Synthesized peptide derived from Beclin-1 . at AA range: 110-190
Specificity :	Beclin-1 Polyclonal Antibody detects endogenous levels of Beclin-1
Formulation :	Liquid in PBS containing 50% glycerol, 0.5% BSA and 0.02% sodium azide.
Source :	Polyclonal, Rabbit,IgG
Dilution :	WB 1:500-2000, ELISA 1:10000-20000
Purification :	The antibody was affinity-purified from rabbit antiserum by affinity-chromatography using epitope-specific immunogen.

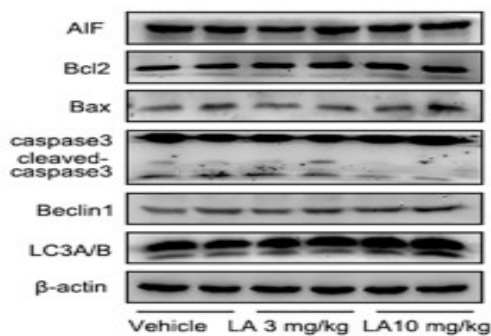
Concentration :	1 mg/ml
Storage Stability :	-15°C to -25°C/1 year(Do not lower than -25°C)
Observed Band :	55kD
Cell Pathway :	Regulation of autophagy;
Background :	beclin 1(BECLN1) Homo sapiens This gene encodes a protein that regulates autophagy, a catabolic process of degradation induced by starvation. The encoded protein is a component of the phosphatidylinositol-3-kinase (PI3K) complex which mediates vesicle-trafficking processes. This protein is thought to play a role in multiple cellular processes, including tumorigenesis, neurodegeneration and apoptosis. Alternative splicing results in multiple transcript variants. [provided by RefSeq, Sep 2015],
Function :	function:Plays a central role in autophagy (By similarity). May play a role in antiviral host defense. Protects against infection by a neurovirulent strain of Sindbis virus.,similarity:Belongs to the beclin family.,subcellular location:Expressed in dendrites and cell bodies of cerebellar Purkinje cells.,subunit:Interacts with GOPC and GRID2. Interacts with AMBRA1. Probably forms a complex with AMBRA1 and PIK3C3 (By similarity). Interacts with BCL2 and BCL2L1.,tissue specificity:Ubiquitous.,
Subcellular Location :	Cytoplasm . Golgi apparatus, trans-Golgi network membrane ; Peripheral membrane protein . Endosome membrane ; Peripheral membrane protein . Endoplasmic reticulum membrane ; Peripheral membrane protein . Mitochondrion membrane ; Peripheral membrane protein . Endosome . Cytoplasmic vesicle, autophagosome . Interaction with ATG14 promotes translocation to autophagosomes. Expressed in dendrites and cell bodies of cerebellar Purkinje cells (By similarity). . ; [Beclin-1-C 35 kDa]: Mitochondrion . Nucleus . Cytoplasm . ; [Beclin-1-C 37 kDa]: Mitochondrion .
Expression :	Ubiquitous.
Tag :	orthogonal
Sort :	1
No1 :	pd017
No2 :	pd017
No4 :	1

Host : Rabbit

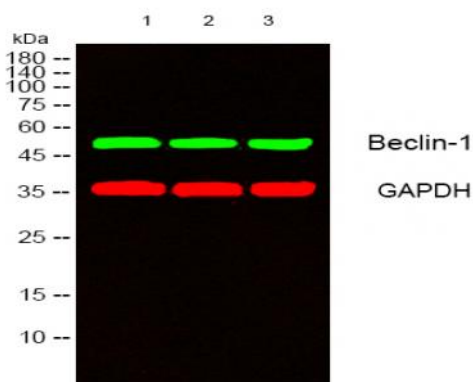
Modifications : Unmodified

Products Images

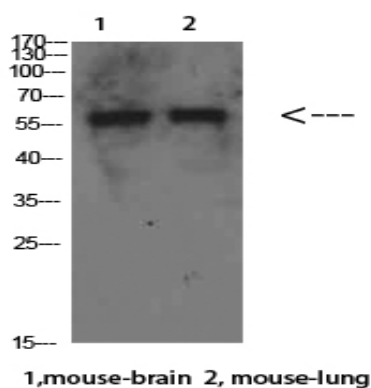
E



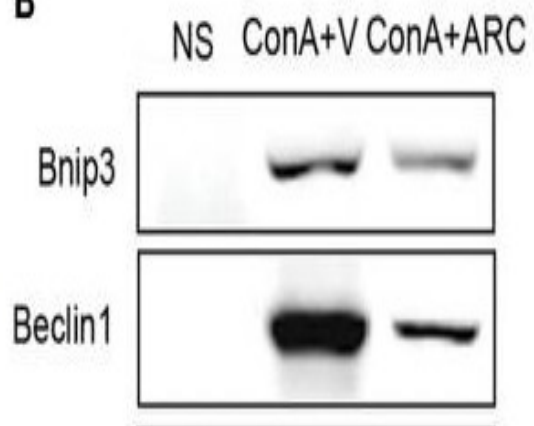
Zhang, Yan-Hui, et al. "α-Lipoic acid improves abnormal behavior by mitigation of oxidative stress, inflammation, ferroptosis, and tauopathy in P301S Tau transgenic mice." *Redox biology* 14 (2018): 535-548.



Western blot analysis of lysates from 1) mouse-brain , 2) mouse-lung, 3) HeLa cells, [Green] primary antibody was diluted at 1:1000, 4° over night, secondary antibody(cat:RS23920)was diluted at 1:10000, 37° 1hour. [Red] GAPDH Monoclonal Antibody(2B8) (cat:YM3029) antibody was diluted at 1:5000 as loading control, 4° over night,secondary antibody(cat:RS23710)was diluted at 1:10000, 37° 1hour.



Western Blot analysis of mouse-brain mouse-lung cells using Beclin-1 Polyclonal Antibody diluted at 1:500. Secondary antibody(catalog#:RS0002) was diluted at 1:20000

B

Feng, Qin. "Quantitative proteomic analysis reveals that Arctigenin alleviates concanavalin A-induced hepatitis through suppressing immune system and regulating autophagy." *Frontiers in immunology* 9 (2018): 1881.