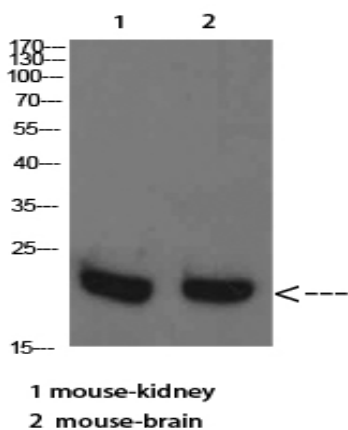


## RHEB Polyclonal Antibody

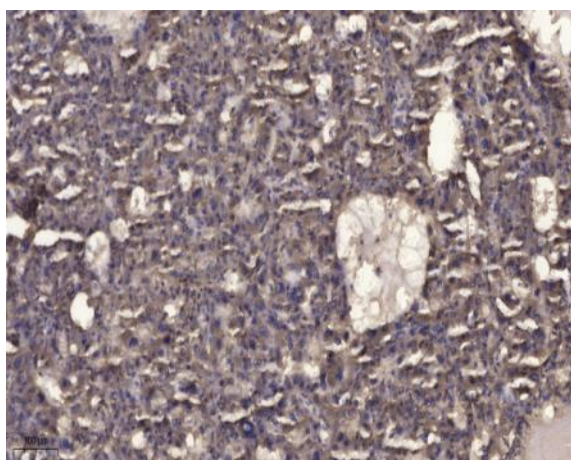
<b>Catalog No :</b>	YT5757
<b>Reactivity :</b>	Human;Mouse;Rat;Predicted:Cow
<b>Applications :</b>	WB;ELISA;IHC
<b>Target :</b>	RHEB
<b>Fields :</b>	>>Phospholipase D signaling pathway;>>Autophagy - animal;>>mTOR signaling pathway;>>PI3K-Akt signaling pathway;>>AMPK signaling pathway;>>Longevity regulating pathway;>>Cellular senescence;>>Thermogenesis;>>Insulin signaling pathway;>>Thyroid hormone signaling pathway;>>Human cytomegalovirus infection;>>Human papillomavirus infection;>>Herpes simplex virus 1 infection;>>Choline metabolism in cancer
<b>Gene Name :</b>	RHEB RHEB2
<b>Protein Name :</b>	RHEB
<b>Human Gene Id :</b>	6009
<b>Human Swiss Prot No :</b>	Q15382
<b>Mouse Gene Id :</b>	19744
<b>Mouse Swiss Prot No :</b>	Q921J2
<b>Rat Swiss Prot No :</b>	Q62639
<b>Immunogen :</b>	Synthetic Peptide of RHEB
<b>Specificity :</b>	This antibody detects endogenous levels of RHEB Polyclonal Antibody at Human;Mouse;Rat;Predicted:Cow, It doesn't react with total protein.
<b>Formulation :</b>	Liquid in PBS containing 50% glycerol, 0.5% BSA and 0.02% sodium azide.
<b>Source :</b>	Polyclonal, Rabbit,IgG

<b>Dilution :</b>	<u>WB 1:500-2000;IHC 1:50-300; ELISA 2000-20000</u>
<b>Purification :</b>	<u>The antibody was affinity-purified from rabbit antiserum by affinity-chromatography using epitope-specific immunogen.</u>
<b>Concentration :</b>	<u>1 mg/ml</u>
<b>Storage Stability :</b>	<u>-15°C to -25°C/1 year(Do not lower than -25°C)</u>
<b>Observed Band :</b>	<u>20kD</u>
<b>Cell Pathway :</b>	<u>mTOR;Insulin_Receptor;</u>
<b>Background :</b>	<u>This gene is a member of the small GTPase superfamily and encodes a lipid-anchored, cell membrane protein with five repeats of the RAS-related GTP-binding region. This protein is vital in regulation of growth and cell cycle progression due to its role in the insulin/TOR/S6K signaling pathway. The protein has GTPase activity and shuttles between a GDP-bound form and a GTP-bound form, and farnesylation of the protein is required for this activity. Three pseudogenes have been mapped, two on chromosome 10 and one on chromosome 22. [provided by RefSeq, Jul 2008],</u>
<b>Function :</b>	<u>function:Not known; binds GTP and exhibits intrinsic GTPase activity.,similarity:Belongs to the small GTPase superfamily. Rheb family.,tissue specificity:Ubiquitous. Highest levels observed in skeletal and cardiac muscle.,</u>
<b>Subcellular Location :</b>	<u>Endomembrane system ; Lipid-anchor ; Cytoplasmic side . Golgi apparatus membrane ; Lipid-anchor ; Cytoplasmic side . Cytoplasm, cytosol . Endoplasmic reticulum membrane ; Lipid-anchor ; Cytoplasmic side .</u>
<b>Expression :</b>	<u>Ubiquitous. Highest levels observed in skeletal and cardiac muscle.</u>
<b>Tag :</b>	<u>orthogonal</u>
<b>Sort :</b>	<u>14439</u>
<b>No4 :</b>	<u>1</u>
<b>Host :</b>	<u>Rabbit</u>
<b>Modifications :</b>	<u>Unmodified</u>

## Products Images



Western Blot analysis of mouse-kidney mouse-brain cells using RHEB Polyclonal Antibody diluted at 1:2000. Secondary antibody(catalog#:RS0002) was diluted at 1:20000



Immunohistochemical analysis of paraffin-embedded human liver cancer. 1, Antibody was diluted at 1:200(4° overnight). 2, Tris-EDTA,pH9.0 was used for antigen retrieval. 3,Secondary antibody was diluted at 1:200(room temperature, 45min).