

IL-26 Polyclonal Antibody

Catalog No :	YT5723
Reactivity :	Human;Rat;Mouse;
Applications :	WB;ELISA
Target :	IL-26
Fields :	>>Cytokine-cytokine receptor interaction
Gene Name :	IL26
Protein Name :	Interleukin-26
Human Gene Id :	55801
Human Swiss Prot No :	Q9NPH9
Immunogen :	Synthesized peptide derived from Interleukin-26 at AA range: 21-70
Specificity :	IL-26 Polyclonal Antibody detects endogenous levels of IL-26 protein.
Formulation :	Liquid in PBS containing 50% glycerol, 0.5% BSA and 0.02% sodium azide.
Source :	Polyclonal, Rabbit,IgG
Dilution :	WB 1:500 - 1:2000. ELISA: 1:10000. Not yet tested in other applications.
Purification :	The antibody was affinity-purified from rabbit antiserum by affinity-chromatography using epitope-specific immunogen.
Concentration :	1 mg/ml
Storage Stability :	-15°C to -25°C/1 year(Do not lower than -25°C)
Observed Band :	25kD

Cell Pathway : Cytokine-cytokine receptor interaction;Jak_STAT;

Background : This gene was identified by its overexpression specifically in herpesvirus samimiri-transformed T cells. The encoded protein is a member of the IL10 family of cytokines. It is a secreted protein and may function as a homodimer. This protein is thought to contribute to the transformed phenotype of T cells after infection by herpesvirus samimiri. [provided by RefSeq, Jul 2008],

Function : induction:By Herpesvirus saimiri infection.,online information:Interleukin-26 entry,similarity:Belongs to the IL-10 family.,subunit:Homodimer.,tissue specificity:Expressed in HVS transformed T-cells but not other T-cell lines or primary stimulated T-cells.,

Subcellular Location : Secreted .

Expression : Expressed in HVS transformed T-cells but not other T-cell lines or primary stimulated T-cells. Expressed in colonic T-cells including Th17 inflammatory T-cells; the expression is significantly increased in serum of patients with Crohn's disease (at protein level).

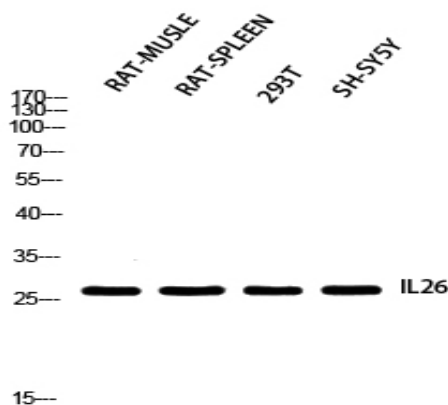
Sort : 8484

No4 : 1

Host : Rabbit

Modifications : Unmodified

Products Images



Western blot analysis of RAT-MUSCLE RAT-SPLEEN 293T SH-SY5Y using IL26 antibody. Antibody was diluted at 1:2000. Secondary antibody(catalog#:RS0002) was diluted at 1:20000