

**SAMHD1 Polyclonal Antibody**

<b>Catalog No :</b>	YT5491
<b>Reactivity :</b>	Human;Mouse
<b>Applications :</b>	WB;IHC;IF;ELISA
<b>Target :</b>	SAMHD1
<b>Fields :</b>	>>Viral life cycle - HIV-1;>>Human immunodeficiency virus 1 infection
<b>Gene Name :</b>	SAMHD1
<b>Protein Name :</b>	SAM domain and HD domain-containing protein 1
<b>Human Gene Id :</b>	25939
<b>Human Swiss Prot No :</b>	Q9Y3Z3
<b>Mouse Gene Id :</b>	56045
<b>Mouse Swiss Prot No :</b>	Q60710
<b>Immunogen :</b>	The antiserum was produced against synthesized peptide derived from the Internal region of human SAMHD1. AA range:431-480
<b>Specificity :</b>	SAMHD1 Polyclonal Antibody detects endogenous levels of SAMHD1 protein.
<b>Formulation :</b>	Liquid in PBS containing 50% glycerol, 0.5% BSA and 0.02% sodium azide.
<b>Source :</b>	Polyclonal, Rabbit,IgG
<b>Dilution :</b>	WB 1:500 - 1:2000. IHC: 1:100-1:300. ELISA: 1:20000.. IF 1:50-200
<b>Purification :</b>	The antibody was affinity-purified from rabbit antiserum by affinity-chromatography using epitope-specific immunogen.
<b>Concentration :</b>	1 mg/ml

**Storage Stability :** -15°C to -25°C/1 year(Do not lower than -25°C)

**Observed Band :** 72kD

**Background :** SAM and HD domain containing deoxynucleoside triphosphate triphosphohydrolase 1 (SAMHD1) Homo sapiens This gene may play a role in regulation of the innate immune response. The encoded protein is upregulated in response to viral infection and may be involved in mediation of tumor necrosis factor-alpha proinflammatory responses. Mutations in this gene have been associated with Aicardi-Goutieres syndrome. [provided by RefSeq, Mar 2010],

**Function :** function:May play a role in mediating proinflammatory responses to TNF-alpha signaling.,induction:By interferon gamma. Up-regulated in TNF-alpha treated lung fibroblasts.,similarity:Contains 1 HD domain.,similarity:Contains 1 SAM (sterile alpha motif) domain.,tissue specificity:Expressed in heart, skeletal muscle, spleen, liver, small intestine, placenta, lung and peripheral blood leukocytes. No expression is seen in brain and thymus.,

**Subcellular Location :** Nucleus . Chromosome . Localizes to sites of DNA double-strand breaks in response to DNA damage. .

**Expression :** Expressed in heart, skeletal muscle, spleen, liver, small intestine, placenta, lung and peripheral blood leukocytes (PubMed:11064105). No expression is seen in brain and thymus (PubMed:11064105).

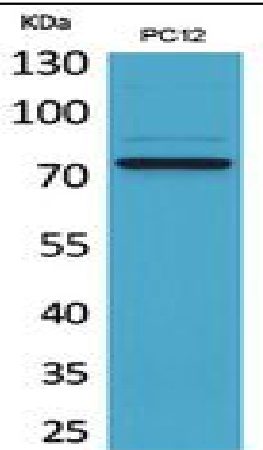
**Sort :** 14757

**No4 :** 1

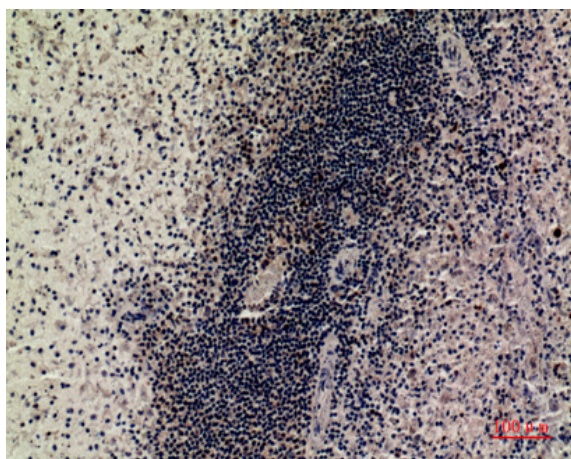
**Host :** Rabbit

**Modifications :** Unmodified

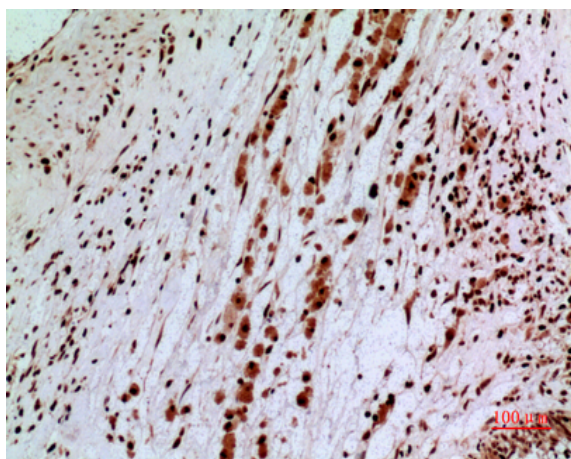
## Products Images



Western Blot analysis of PC12 cells using SAMHD1 Polyclonal Antibody. Secondary antibody(catalog#:RS0002) was diluted at 1:20000 cells nucleus extracted by Minute TM Cytoplasmic and Nuclear Fractionation kit (SC-003, Inventbiotech, MN, USA).



Immunohistochemical analysis of paraffin-embedded human spleen, antibody was diluted at 1:100



Immunohistochemical analysis of paraffin-embedded human brain, antibody was diluted at 1:100