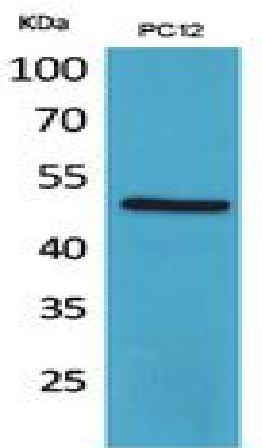


## CRF-RI Polyclonal Antibody

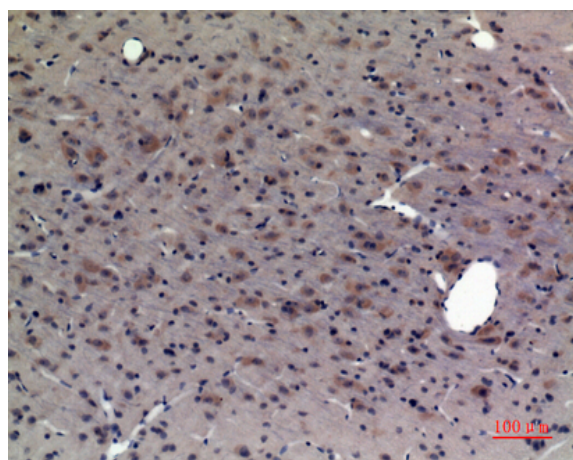
<b>Catalog No :</b>	YT5490
<b>Reactivity :</b>	Human;Mouse;Rat
<b>Applications :</b>	WB;IHC;IF;ELISA
<b>Target :</b>	CRF-RI
<b>Fields :</b>	>>cAMP signaling pathway;>>Neuroactive ligand-receptor interaction;>>Long-term depression;>>Cushing syndrome
<b>Gene Name :</b>	CRHR1
<b>Protein Name :</b>	Corticotropin-releasing factor receptor 1
<b>Human Gene Id :</b>	1394
<b>Human Swiss Prot No :</b>	P34998
<b>Mouse Gene Id :</b>	12921
<b>Mouse Swiss Prot No :</b>	P35347
<b>Rat Gene Id :</b>	58959
<b>Rat Swiss Prot No :</b>	P35353
<b>Immunogen :</b>	The antiserum was produced against synthesized peptide derived from the Internal region of human CRHR1. AA range:71-120
<b>Specificity :</b>	CRF-RI Polyclonal Antibody detects endogenous levels of CRF-RI protein.
<b>Formulation :</b>	Liquid in PBS containing 50% glycerol, 0.5% BSA and 0.02% sodium azide.
<b>Source :</b>	Polyclonal, Rabbit,IgG
<b>Dilution :</b>	WB 1:500 - 1:2000. IHC 1:100 - 1:300. IF 1:200 - 1:1000. ELISA: 1:5000. Not yet tested in other applications.

<b>Purification :</b>	The antibody was affinity-purified from rabbit antiserum by affinity-chromatography using epitope-specific immunogen.
<b>Concentration :</b>	1 mg/ml
<b>Storage Stability :</b>	-15°C to -25°C/1 year(Do not lower than -25°C)
<b>Observed Band :</b>	50kD
<b>Cell Pathway :</b>	Neuroactive ligand-receptor interaction;Long-term depression;
<b>Background :</b>	<p>This gene encodes a G-protein coupled receptor that binds neuropeptides of the corticotropin releasing hormone family that are major regulators of the hypothalamic-pituitary-adrenal pathway. The encoded protein is essential for the activation of signal transduction pathways that regulate diverse physiological processes including stress, reproduction, immune response and obesity. Alternative splicing results in multiple transcript variants. Naturally-occurring readthrough transcription between this gene and upstream GeneID:147081 results in transcripts that encode isoforms that share similarity with the products of this gene. [provided by RefSeq, Aug 2016],</p>
<b>Function :</b>	<p>function:This is a receptor for corticotropin releasing factor. Shows high-affinity CRF binding. The activity of this receptor is mediated by G proteins which activate adenylyl cyclase.,PTM:C-terminal Ser or Thr residues may be phosphorylated.,similarity:Belongs to the G-protein coupled receptor 2 family.,tissue specificity:Predominantly expressed in the cerebellum, pituitary, cerebral cortex and olfactory lobe.,</p>
<b>Subcellular Location :</b>	Cell membrane; Multi-pass membrane protein. Endosome. Agonist-binding promotes endocytosis.
<b>Expression :</b>	Predominantly expressed in the cerebellum, pituitary, cerebral cortex and olfactory lobe.
<b>Tag :</b>	hot
<b>Sort :</b>	4562
<b>No4 :</b>	1
<b>Host :</b>	Rabbit
<b>Modifications :</b>	Unmodified

## Products Images



Western Blot analysis of PC12 cells using CRF-RI Polyclonal Antibody. Secondary antibody(catalog#:RS0002) was diluted at 1:20000



Immunohistochemical analysis of paraffin-embedded rat-brain, antibody was diluted at 1:100