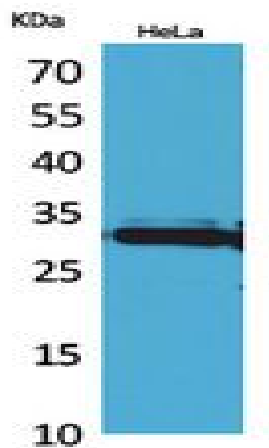


IL-33 Polyclonal Antibody

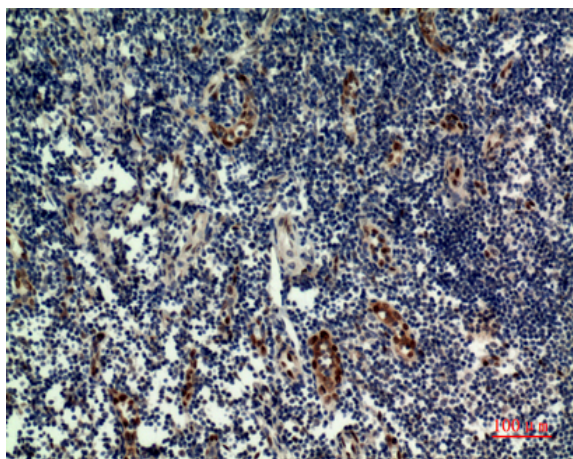
Catalog No :	YT5487
Reactivity :	Human;Rat;Mouse;
Applications :	WB;IHC;IF;ELISA
Target :	IL-33
Fields :	>>Cytokine-cytokine receptor interaction;>>Necroptosis;>>Cytosolic DNA-sensing pathway;>>Influenza A
Gene Name :	IL33
Protein Name :	Interleukin-33
Human Gene Id :	90865
Human Swiss Prot No :	O95760
Mouse Gene Id :	77125
Mouse Swiss Prot No :	Q8BVZ5
Rat Gene Id :	361749
Rat Swiss Prot No :	Q66H70
Immunogen :	The antiserum was produced against synthesized peptide derived from the Internal region of human IL33. AA range:121-170
Specificity :	IL-33 Polyclonal Antibody detects endogenous levels of IL-33 protein.
Formulation :	Liquid in PBS containing 50% glycerol, 0.5% BSA and 0.02% sodium azide.
Source :	Polyclonal, Rabbit,IgG
Dilution :	WB 1:500 - 1:2000. IHC: 1:100-1:300. ELISA: 1:20000.. IF 1:50-200

Purification :	The antibody was affinity-purified from rabbit antiserum by affinity-chromatography using epitope-specific immunogen.
Concentration :	1 mg/ml
Storage Stability :	-15°C to -25°C/1 year(Do not lower than -25°C)
Observed Band :	31kD
Cell Pathway :	Cytosolic DNA-sensing pathway;
Background :	The protein encoded by this gene is a cytokine that binds to the IL1RL1/ST2 receptor. The encoded protein is involved in the maturation of Th2 cells and the activation of mast cells, basophils, eosinophils and natural killer cells. Several transcript variants encoding different isoforms have been found for this gene. [provided by RefSeq, Sep 2015],
Function :	caution:Was originally (PubMed:12819012) thought to one of the key factors that controls the specialized post-capillary high endothelial venules (HEV) phenotype found in organized secondary lymphoid tissue and to be nuclear localized.,function:Cytokine that binds to and signals through IL1RL1/ST2 and its stimulation recruits MYD88, IRAK1, IRAK4, and TRAF6, followed by phosphorylation of MAPK3/ERK1 and/or MAPK1/ERK2, MAPK14, and MAPK8. Induces T helper type 2-associated cytokines.,PTM:Proteolytically converted to a mature form by CASP1.,similarity:Belongs to the IL-1 family. Highly divergent.,tissue specificity:Expressed at high level in high endothelial venules found in tonsils, Peyer patches and mesenteric lymph nodes. Almost undetectable in placenta.,
Subcellular Location :	Nucleus . Chromosome . Cytoplasm . Cytoplasmic vesicle, secretory vesicle . Secreted . Associates with heterochromatin and mitotic chromosomes (PubMed:17185418). The secretion is dependent on protein unfolding and facilitated by the cargo receptor TMED10; it results in protein translocation from the cytoplasm into the ERGIC (endoplasmic reticulum-Golgi intermediate compartment) followed by vesicle entry and secretion (PubMed:32272059). .
Expression :	Expressed at high level in high endothelial venules found in tonsils, Peyer patches and mesenteric lymph nodes. Almost undetectable in placenta.
Tag :	orthogonal
Sort :	1
No4 :	1
Host :	Rabbit

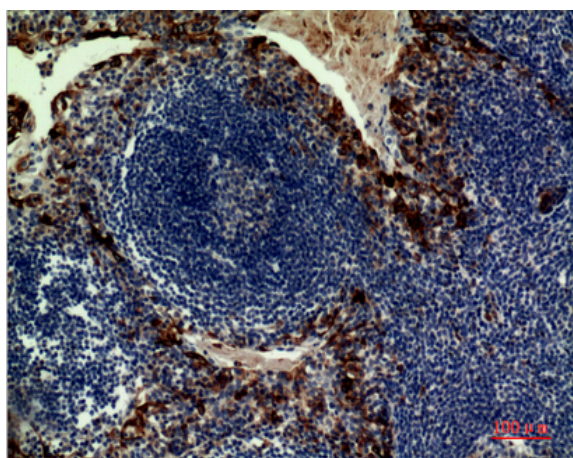
Products Images



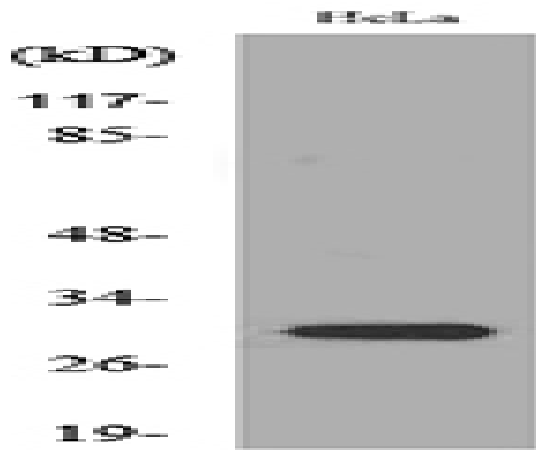
Western Blot analysis of HeLa cells using IL-33 Polyclonal Antibody. Secondary antibody(catalog#:RS0002) was diluted at 1:20000



Immunohistochemical analysis of paraffin-embedded human tonsilla, antibody was diluted at 1:100



Immunohistochemical analysis of paraffin-embedded human tonsilla, antibody was diluted at 1:100



Western blot analysis of lysate from HeLa cells, using IL33 Antibody.