

CD225 Polyclonal Antibody

Catalog No :	YT5478
Reactivity :	Human;Mouse
Applications :	WB;IHC;IF;ELISA
Target :	CD225
Fields :	>>B cell receptor signaling pathway
Gene Name :	IFITM1
Protein Name :	Interferon-induced transmembrane protein 1
Human Gene Id :	8519
Human Swiss Prot No :	P13164
Mouse Gene Id :	68713
Mouse Swiss Prot No :	Q9D103
Immunogen :	The antiserum was produced against synthesized peptide derived from the N-terminal region of human IFITM1. AA range:1-50
Specificity :	CD225 Polyclonal Antibody detects endogenous levels of CD225 protein.
Formulation :	Liquid in PBS containing 50% glycerol, 0.5% BSA and 0.02% sodium azide.
Source :	Polyclonal, Rabbit,IgG
Dilution :	WB 1:500 - 1:2000. IHC: 1:100-1:300. ELISA: 1:20000.. IF 1:50-200
Purification :	The antibody was affinity-purified from rabbit antiserum by affinity-chromatography using epitope-specific immunogen.
Concentration :	1 mg/ml

Storage Stability : -15°C to -25°C/1 year(Do not lower than -25°C)

Observed Band : 15kD

Cell Pathway : B_Cell_Antigen;

Background : function:Implicated in the control of cell growth. Component of a multimeric complex involved in the transduction of antiproliferative and homotypic adhesion signals.,induction:By alpha and gamma interferons.,similarity:Belongs to the CD225 family.,

Function : function:Implicated in the control of cell growth. Component of a multimeric complex involved in the transduction of antiproliferative and homotypic adhesion signals.,induction:By alpha and gamma interferons.,similarity:Belongs to the CD225 family.,

Subcellular Location : Cell membrane ; Single-pass membrane protein . Lysosome membrane .

Expression : Bone (at protein level). Levels greatly elevated in colon cancer, cervical cancer, esophageal cancer and ovarian cancer. Expressed in glioma cell lines.

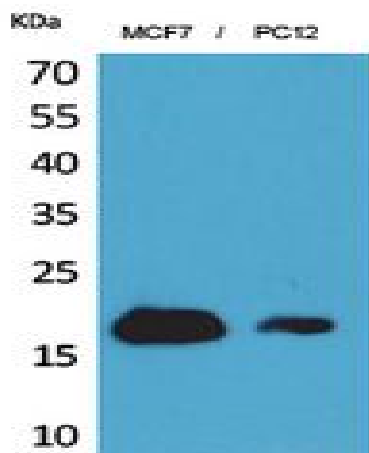
Sort : 3471

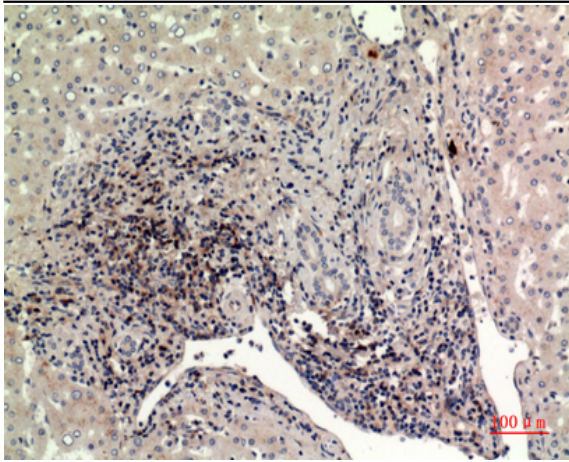
No4 : 1

Host : Rabbit

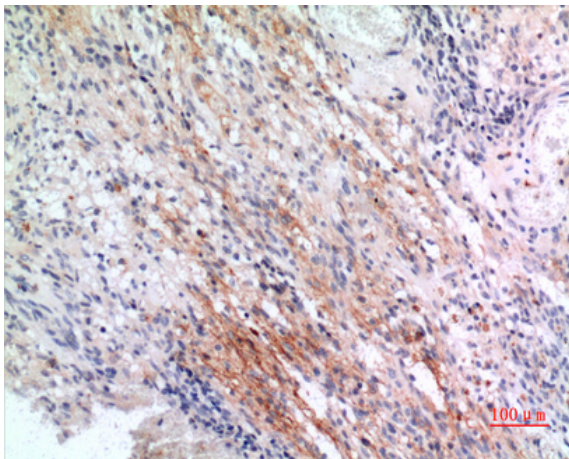
Modifications : Unmodified

Products Images





Immunohistochemical analysis of paraffin-embedded human-liver, antibody was diluted at 1:100



Immunohistochemical analysis of paraffin-embedded human-brain, antibody was diluted at 1:100