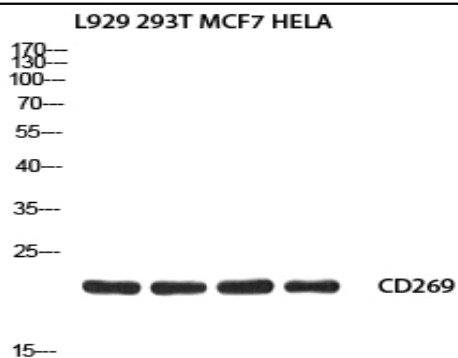


CD269 Polyclonal Antibody

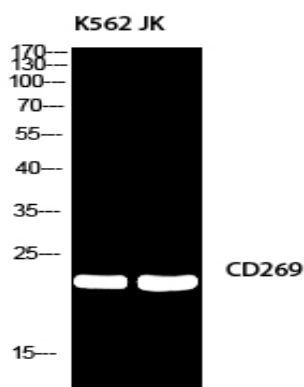
Catalog No :	YT5687
Reactivity :	Human;Rat;Mouse;
Applications :	WB;ELISA
Target :	CD269
Fields :	>>Cytokine-cytokine receptor interaction;>>Intestinal immune network for IgA production
Gene Name :	TNFRSF17
Protein Name :	Tumor necrosis factor receptor superfamily member 17
Human Gene Id :	608
Human Swiss Prot No :	Q02223
Mouse Swiss Prot No :	O88472
Immunogen :	Synthesized peptide derived from the Internal region of human CD269.
Specificity :	CD269 Polyclonal Antibody detects endogenous levels of CD269 protein.
Formulation :	Liquid in PBS containing 50% glycerol, 0.5% BSA and 0.02% sodium azide.
Source :	Polyclonal, Rabbit,IgG
Dilution :	WB 1:500 - 1:2000. ELISA: 1:10000. Not yet tested in other applications.
Purification :	The antibody was affinity-purified from rabbit antiserum by affinity-chromatography using epitope-specific immunogen.
Concentration :	1 mg/ml
Storage Stability :	-15°C to -25°C/1 year(Do not lower than -25°C)

Observed Band :	20kD
Cell Pathway :	Cytokine-cytokine receptor interaction;Intestinal immune network for IgA production;
Background :	The protein encoded by this gene is a member of the TNF-receptor superfamily. This receptor is preferentially expressed in mature B lymphocytes, and may be important for B cell development and autoimmune response. This receptor has been shown to specifically bind to the tumor necrosis factor (ligand) superfamily, member 13b (TNFSF13B/TALL-1/BAFF), and to lead to NF-kappaB and MAPK8/JNK activation. This receptor also binds to various TRAF family members, and thus may transduce signals for cell survival and proliferation. [provided by RefSeq, Jul 2008],
Function :	disease:A chromosomal aberration involving TNFRSF17 is found in a form of T-cell acute lymphoblastic leukemia (T-ALL). Translocation t(4;16)(q26;p13) with IL2.,function:Receptor for TNFSF13B/BLyS/BAFF and TNFSF13/APRIL. Promotes B-cell survival and plays a role in the regulation of humoral immunity. Activates NF-kappa-B and JNK.,similarity:Contains 1 TNFR-Cys repeat.,subcellular location:Perinuclear Golgi-like structures.,subunit:Associates with TRAF1, TRAF2, TRAF3, TRAF5 and TRAF6.,tissue specificity:Expressed in mature B-cells, but not in T-cells or monocytes.,
Subcellular Location :	Cell membrane; Single-pass type III membrane protein. Endomembrane system; Single-pass type III membrane protein. Perinuclear Golgi-like structures.
Expression :	Expressed in mature B-cells, but not in T-cells or monocytes.
Sort :	3501
No4 :	1
Host :	Rabbit
Modifications :	Unmodified

Products Images



Western blot analysis of L929 293T MCF7 HELA using CD269 antibody. Antibody was diluted at 1:2000. Secondary antibody(catalog#:RS0002) was diluted at 1:20000



Western blot analysis of K562/JK using CD269 antibody. Antibody was diluted at 1:2000. Secondary antibody(catalog#:RS0002) was diluted at 1:20000