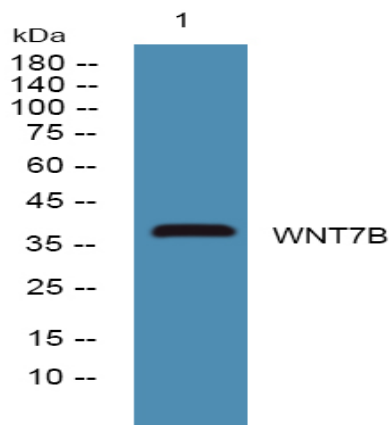


WNT7B Polyclonal Antibody

Catalog No :	YN0288
Reactivity :	Human;Mouse
Applications :	WB;ELISA
Target :	WNT7B
Fields :	>>mTOR signaling pathway;>>Wnt signaling pathway;>>Hippo signaling pathway;>>Signaling pathways regulating pluripotency of stem cells;>>Melanogenesis;>>Cushing syndrome;>>Alzheimer disease;>>Pathways of neurodegeneration - multiple diseases;>>Human papillomavirus infection;>>Pathways in cancer;>>Proteoglycans in cancer;>>Basal cell carcinoma;>>Breast cancer;>>Hepatocellular carcinoma;>>Gastric cancer
Gene Name :	WNT7B
Protein Name :	Protein Wnt-7b
Human Gene Id :	7477
Human Swiss Prot No :	P56706
Mouse Swiss Prot No :	P28047
Immunogen :	Synthesized peptide derived from human protein . at AA range: 110-190
Specificity :	WNT7B Polyclonal Antibody detects endogenous levels of protein.
Formulation :	Liquid in PBS containing 50% glycerol, and 0.02% sodium azide.
Source :	Polyclonal, Rabbit,IgG
Dilution :	WB 1:500-2000 ELISA 1:5000-20000
Purification :	The antibody was affinity-purified from rabbit antiserum by affinity-chromatography using epitope-specific immunogen.

Concentration :	1 mg/ml
Storage Stability :	-15°C to -25°C/1 year(Do not lower than -25°C)
Observed Band :	38kD
Cell Pathway :	WNT;WNT-T CELLHedgehog;Melanogenesis;Pathways in cancer;Basal cell carcinoma;
Background :	This gene is a member of the WNT gene family, which consists of structurally related genes that encode secreted signaling proteins. These proteins have been implicated in oncogenesis and in several developmental processes, including regulation of cell fate and patterning during embryogenesis. Among members of the human WNT family, this gene product is most similar to WNT7A protein. [provided by RefSeq, Oct 2008],
Function :	function:Ligand for members of the frizzled family of seven transmembrane receptors. Probable developmental protein. May be a signaling molecule which affects the development of discrete regions of tissues. Is likely to signal over only few cell diameters.,similarity:Belongs to the Wnt family.,subunit:Interacts with PORCN.,tissue specificity:Moderately expressed in fetal brain, weakly expressed in fetal lung and kidney, and faintly expressed in adult brain, lung and prostate.,
Subcellular Location :	Secreted, extracellular space, extracellular matrix . Secreted .
Expression :	Moderately expressed in fetal brain, weakly expressed in fetal lung and kidney, and faintly expressed in adult brain, lung and prostate.
Tag :	orthogonal
Sort :	24322
No4 :	1
Host :	Rabbit
Modifications :	Unmodified

Products Images



Western blot analysis of lysates from HCT116 cells, primary antibody was diluted at 1:1000, 4° over night